



# Ex Douane Boot 1934

€14,950 • Harlingen Netherlands • Used • 1935

## Presented by

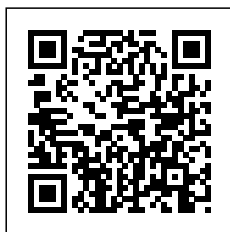
Sjoerd Kampen  
Phone: 0031(0)6-54723943

## Scheepsmakelaardij Goliath

Hendrik Bulthuisweg 2  
8606 KB SNEEK  
Netherlands



Scheepsmakelaar  
dij Goliath



7zea.com

## Details

|              |                  |
|--------------|------------------|
| Make:        | Ex Douane Boot   |
| Model:       | 1934             |
| Year:        | 1935             |
| Condition:   | Used             |
| Engine type: |                  |
| Length:      | 9.1 m (29.86 ft) |
| Beam:        | 2.6 m (8.53 ft)  |
| Cabins:      | 0                |
| Berths:      | 0                |

# Description

EN

Very nice solid ex-custom boat with very recent engine and tent. Solid boat with kitchen and fixed berths.

Beautiful solid ex Customs boat. Very recent engine ( 2016), deck tent and cockpit tent (2021) Well maintained but now needs some work again (painting outside)

## Equipment

Boat cover: New cockpit tent and winter tent De Vries Sails 2021

NL

Zeer mooie degelijke ex-douaneboot met zeer recente motor en tent. Degelijk schip met keuken en vaste slaappleatsen.

Mooie degelijke ex Douaneboot. Zeer recente motor ( 2016), dektent en kuintent (2021) Goed onderhouden geweest maar hoeft nu weer wat werkzaamheden (schilderwerk buitenom)

## Uitrusting

Dekzeil(en): Nieuwe kuintent en wintertent De Vries Sails 2021

DE

Sehr schöne solide Ex-Customs Boot mit sehr aktuellen Motor und Zelt. Solide Boot mit Küche und festen Kojen.

Schöne solide ex Customs Boot. Sehr aktuelle Motor ( 2016), Deck Zelt und Cockpit-Zelt (2021) Wurde gut gepflegt, aber jetzt braucht einige Arbeit wieder (Malerei außerhalb)

## Zubehören

Deckplanen: Neues Cockpitzelt und Winterzelt De Vries Sails 2021

FR

Très beau bateau solide ex-customs avec moteur et tente très récents. Bateau solide avec cuisine et couchettes fixes.

Beau bateau solide ex Douane. Moteur très récent ( 2016), tente de pont et tente de cockpit (2021). A été bien entretenu mais a besoin de quelques travaux (peinture extérieure).

## Equipment

Bâches: Nouvelle tente de cockpit et tente d'hiver De Vries Sails 2021

## General information

|              |                |
|--------------|----------------|
| Make:        | Ex Douane Boot |
| Model:       | 1934           |
| Year:        | 1935           |
| Condition:   | Used           |
| Engine type: |                |

## Measurements

|         |                  |
|---------|------------------|
| Length: | 9.1 m (29.86 ft) |
| Beam:   | 2.6 m (8.53 ft)  |
| Deep:   | 0.6 m (1.97 ft)  |

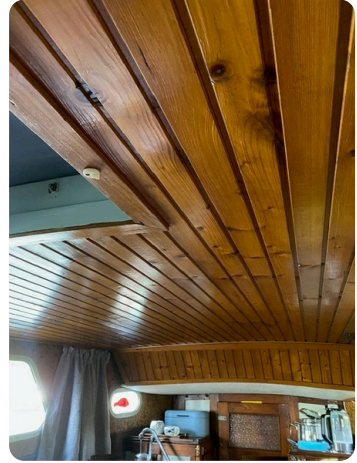
## Accommodation

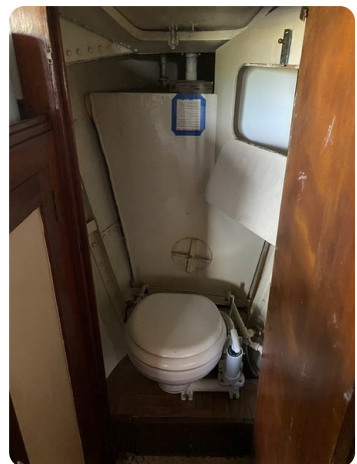
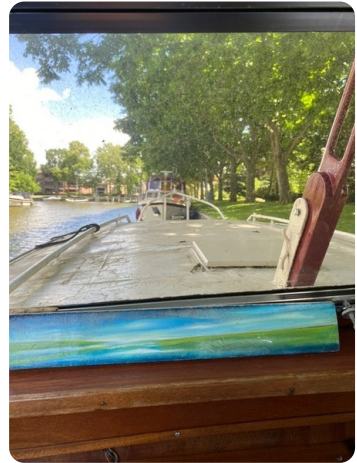
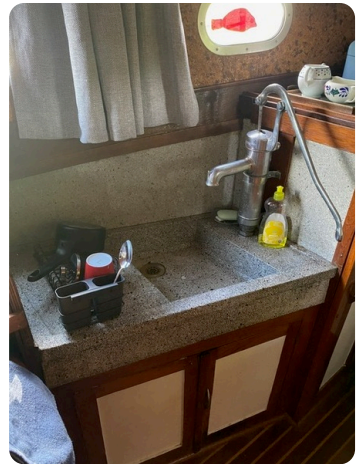
|         |   |
|---------|---|
| Cabins: | 0 |
| Berths: | 0 |

# Images

---









**Scheepsmakelaardij Goliath**

Hendrik Bulthuisweg 2

8606 KB SNEEK

Netherlands

Phone: 0031(0)6-54723943

<https://www.scheepsmakelaardijgoliath.nl>

