



Fairline F Line 33

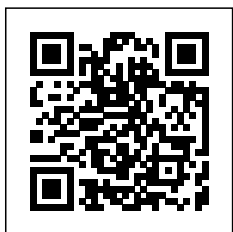
US\$598,000 • Sarasota United States of America (USA) • New • 2022

Presented by



Phone: 1-941-355-5500

Nautical Ventures
50 SOUTH BRYAN RD.
FL 33004 DANIA BEACH
United States of America
(USA)



Nautical
Ventures



7zea.com

Details

Make:	Fairline
Model:	F Line 33
Year:	2022
Condition:	New
Engine type:	
Fuel tank:	677.59 l (179.00 gal)
Length:	33 ft (10.06 m)
Beam:	11 ft (3.35 m)
Cabins:	1
Watertank:	158.99 l (42.00 gal)

Description

Available in Store: Sarasota

This 2021 Fairline 33 is powered by twin 350 HP Mercury outboards featuring a luxurious, relaxing space throughout, plus stunning finishing touches and the most up-to-date technology. A Sleek, stylish and searing performance, it is designed to make the heart race and leave the competition in its wake. Embrace your adventurous side.

The helm includes a bench helm seat with Movida aluminium, bow thruster joystick, Fusion system, Garmin 7" touchscreen, Mercury 7" VesselView, three cup holders, a compass, Garmin VHF radio, USB sockets, electric trim tabs and intelligent steering wheel.

The forward cabin is accessed through a sliding entryway in the helm and includes a stand alone bedroom with a convertible double berth, Domestic self-contained air-conditioning 16,000 BTU, Day head with sink, toilet & shower, Electric silent-flush freshwater toilet, lounge seating with Mood Lighting, Fridge 42ltr to cabin sideboard, LED ceiling lights, Stowage lockers under seating, Oak satin wood, Wicker and Seely leather seating, removable cabin table, a 32" mirror TV, Fusion audio unit with bluetooth connectivity & speakers.

Other impressive features are fully integrated Wet bar and storage with sink and fridge, ability to have a secondary sunbed via the aft seating area by adjusting the backrests, amplifier with additional 8" waterproof speakers & subwoofer to cockpit audio, Fusion Apollo head unit with two 8" waterproof speakers, freshwater deck wash outlets and Icemaker & Kenyon induction hob to cockpit bar.

Other features include fixed cockpit table, Bimini Top, Generator with hydro hush exhaust system, Shore power inlet, Side deck access doors, Fire extinguisher, curved glass windscreen, Foredeck sunbed cushions and an English manual.

Engine 1

- Mercury
- 2021
- 350.00 HP
- Gas/Petrol

Engine 2

- Mercury
- 2021
- 350.00 HP
- Gas/Petrol

Selected Options

- Bow thruster
- Twin Mercury 350HP
- 7" Mercury Vesselview
- 7" Garmin GPS
- Freshwater deck wash
- Mood Lighting
- 8mm, 30m stainless steel anchor chain
- Generator Westerbeke 3.5w
- Interior Wood - Oak Sating
- Saloon Settee - Wicker and Seely Leather
- Saloon Flooring - Oak Slate Grey (Wood)
- Cabin Flooring - Paradise White Water (Carpet)
- Saloon Table - Fixed height table
- Foredeck sunbed cushions

- Cockpit Mood Lighting
- Bimini Top
- 16,000 BTU Air Conditioning (self contained)
- Wet bar and storage with sink and fridge
- TV to saloon (behind mirror) w/Apple TV, Fusion audio unit w/bluetooth connectivity & speakers
- Amplifier, 2x additional 8" waterproof speakers & subwoofer to cockpit audio
- Icemaker & induction hob to cockpit bar
- Fridge 42ltr to saloon
- Exterior mood lighting includes transom, side decks, cockpit & illuminated F//Line badge to bow
- Interior Mood lighting including daylight window panels & dimmer switches throughout
- Bed linen set

Deck

- Anchor light
- Anchor chain (8mm x 30m)
- Anchor chain locker
- Anchor winch remote controls
- Anchor winch (electric)
- Bilge pump switches with integral operating warning lights & audible alarms
- Carbon fiber ensign staff
- Chain stopper
- Fenders
- High capacity emergency manual bilge pump system
- Horn
- Hot & cold-water handheld transom shower
- Mooring lines
- Moulded non-slip deck surface
- Navigation lights
- Recessed self-draining area on foredeck for sunbed cushions
- Rubbing strake
- Self-stowing stainless-steel anchor
- Stainless steel pop-up bow, spring & stern cleats
- Stainless steel stemhead roller
- Side deck access doors
- Toughened, single piece, curved glass windscreen
- Water filler
- Waste outlet

Helm

- Compass
- 7" display screen
- 7" Mercury Vesselview
- Three drinks holders
- Electronic single-lever throttle & gear controls for port & starboard engines
- Garmin VHF
- Twin helm seats
- USB socket

Hullform & Construction

- Deep 'V' hull design by J&J Design
- Design, layout & detailing by Alberto
- Full length moulded spray deflectors
- Hull & deck colour - White
- Polyurethane foam cores throughout deck for strength & thermal insulation
- Resin infused hull & internal liner
- Transverse & longitudinal strengthening stringers throughout hull

Saloon

- Access to head
- Companionway timber steps
- First aid kit
- Fixed height table
- Electrical distribution panel
- Fire extinguisher (manual)
- 'V' shape sofa
- LED ceiling lights
- Lockers (overhead)
- Sliding companionway door to cockpit
- Stowage lockers under seating

Mid Cabin

- Double bed
- LED ceiling lights
- Opening porthole
- 2 x half height hanging lockers
- 4 x trinket lockers

Head

- Automatic shower tray pump-out system
- Electric silent-flush freshwater toilet
- Extractor fan
- Full set of bathroom fittings
- Full standing-height shower with adjustable shower head
- Mirrored cabinet doors
- Skylight
- Vanity unit locker & basin with hot & cold pressurised water

Listing MLS by [Yachtr.com](https://www.yachtr.com)

General information

Make:	Fairline
Model:	F Line 33
Year:	2022
Condition:	New

Engine

Engine type:	
Fuel tank:	677.59 l (179.00 gal)

Measurements

Length:	33 ft (10.06 m)
Beam:	11 ft (3.35 m)

Accommodation

Cabins:	1
Watertank:	158.99 l (42.00 gal)
Holdingtank:	79.49 l (21.00 gal)

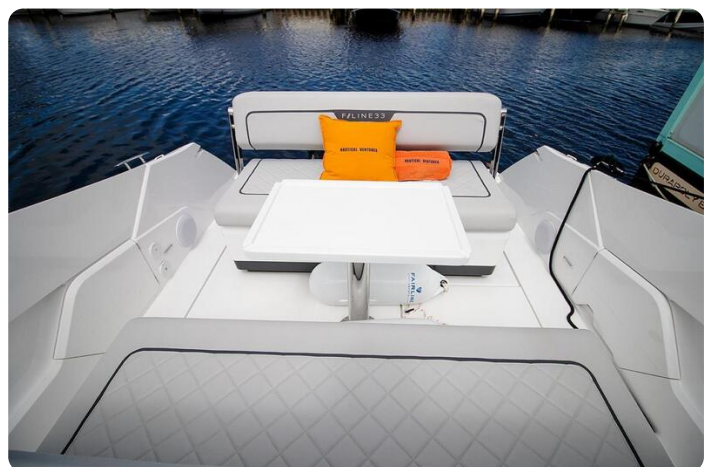
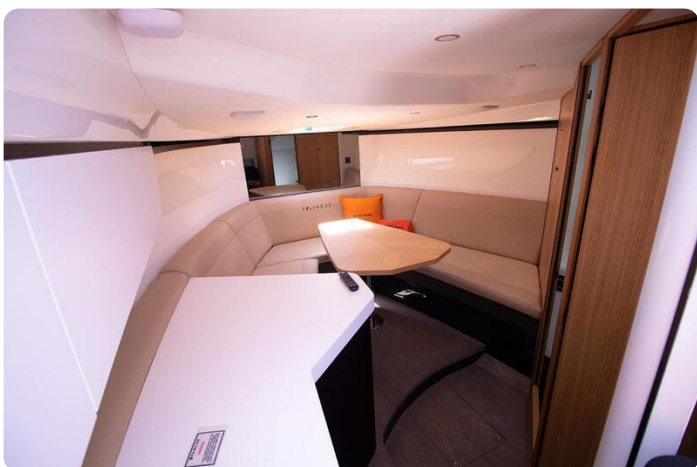
Images















Nautical Ventures
50 SOUTH BRYAN RD.
FL 33004 DANIA BEACH
United States of America (USA)
Phone: 1-941-355-5500
<https://www.nauticalventures.com>

