



# Fairline Squadron 48

£624,950 • Mahon EU • Begagnad • 2018

## Presenterad av

Justin Garwell  
Phone: +44 (0) 1305 766504

**JD YACHTS LIMITED**  
80 THE ESPLANADE  
DT4 7AA WEYMOUTH  
Storbritannien

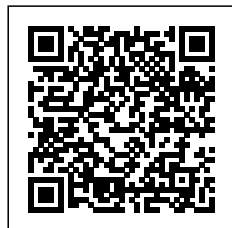


## Detaljer

Tillverkare:	Fairline
Modell:	Squadron 48
År:	2018
Kondition:	Begagnad
Motor:	Volvo IPS600 D6-435, 435 hp
Motortyp:	
Bränsletyp:	Diesel
Längd:	15.54 m (50.98 ft)
Bredd:	4.32 m (14.17 ft)
Kabiner:	0
Kojer:	0



JD YACHTS  
LIMITED



7zea.com

# Beskrivning

ENG

2018. 2 x 435 HP Volvo IPS600 D6-435  
6 berths in 3 cabins  
Lying: Mahon Menorca  
Owners Comments:  
2024 season ready for her new owner.

Antifouled and polished - March 2024.

New anodes - March 2024.

Engines and IPS serviced - March 2024.

Generator serviced - March 2024.

ENG

Extras

11kW Generator  
2 x Double & 2 x Single Heirlooms bedding sets  
3rd Cabin with Bunks in lieu of lower saloon  
40" TV with Harman Kardon entertainment system to saloon & cockpit speakers  
BBQ griddle to flybridge bar  
Blue mood lighting to exterior  
Chocks and pad-eyes on bathing platform for stowage of tender  
Coachroof sun bathing cushions  
Cockpit canopy  
Domestic appliance pack with ceramic hob and microwave  
Fairline durable dinner service, durable tumblers & cutlery set  
Flyscreens to all opening portholes  
Full flybridge cover in BLACK  
Fusion RA205 and speakers to flybridge  
High capacity air conditioning  
Icemaker to flybridge bar  
Interior mood lighting upgrade pack  
Internally sprung mattress to master cabin  
Inverter and breaker - enables audio/visual equipment to run off battery power  
Isolation transformer  
Leather upgrade "PEARL WHITE" to saloon settee  
Manual bimini to flybridge  
Powered hydraulic submersible bathing platform - 400kg lifting capacity  
Random Oak saloon floor upgrade  
Safe with digital keypad  
Teak flybridge table with cover  
Teak-laid flybridge floor  
Underwater lights  
Volvo GPSmap 7612V (12") touchscreen to main helm & flybridge (2 units)  
Walnut gloss interior timber upgrade

Standard Specification

Deck

Anchor chain locker  
Anchor winch controls  
Anchor winch (electric)  
Calibrated anchor chain  
Full set of IMCO navigation lights  
Hot and cold water transom shower  
Moulded non-slip deck surface  
Recessed self-draining area on foredeck for coachroof sun cushions  
Riding light  
Rubbing strake

Self-stowing Delta anchor  
Stainless steel bow fairlead(s)  
Stainless steel bow, spring and stern cleats  
Stainless steel handrails  
Stainless steel pulpit  
Stainless steel stemhead roller  
Stainless steel transom wing cleats  
Swim ladder to bathing platform  
Teak-laid bathing platform  
Toughened glass curved windscreen  
Twin horns  
Twin transom gates from cockpit to integral bathing platform  
Water filler  
Windscreen washers  
Windscreen wipers

Flybridge And Second Helm Position

12V heavy duty weather proof socket  
Access hatch  
Acrylic dodgers  
Adjustable/tilt steering wheel  
Bilge pump warning lights and audible alarms  
Bow thruster controls  
Companion seating to helm  
Drinks holders  
Echosounder and speedometer/distance log repeater(s) with sea water temperature read out  
Electronic single-lever throttle and gear controls for port and starboard engines  
Flybridge bar unit with refrigerator, sink and waste bin  
Forward seating with infill cushion  
Garmin GMI 20 digital multi-function instrument system with colour display  
GRP radar mast  
GRP table with teak border  
Helm position indicator  
Helm positioned to port to allow visibility through flybridge hatch  
High speed magnetic compass  
Instrument covers  
IPS joystick  
Moulded non-slip deck surface  
Powered steering  
Remote anchor winch controls  
Remote control searchlight with controls at both helm stations  
Repeat engine bay fire extinguisher controls  
Repeat flybridge engine instrumentation, controls and electronics  
Sunbed with storage beneath  
Teak laid flybridge steps  
Trim tab controls  
Twin helm seats  
Upholstered seating area with table, convertible to cushioned sunbathing area  
VHF radio incorporating intercom  
Wind-deflecting screen with grab rail

Main Helm Position

12V socket  
Bilge pump switches with integral operating warning lights and audible alarms  
Controls for engine bay fire extinguisher system  
Drinks holders  
Electronic single-lever throttle and gear controls for port and starboard engines  
Fuel gauges  
Full engine instrumentation including; tachometers, temperature gauges, audible alarms and engine hour meters  
Garmin GMI 20 digital multi-function instrument system with colour display

Garmin VHF marine radio  
Helm position indicator  
High-speed magnetic compass  
IPS joystick  
Remote anchor winch controls  
Searchlight with remote control at helm  
Twin helm seats  
Waterproof switches for navigation and riding lights,  
windscreen wipers and engine bay extractor fan(s)

#### Electrical Systems

All 240V, 24V and 12V circuits (where applicable) protected by circuit breakers with main electrical load control panel  
Electrical sockets  
Heavy duty circuit breakers  
Isolating switches to all batteries  
12 Volt  
Batteries - 2x heavy duty batteries for domestic services  
Battery - 1x heavy duty battery for exclusive port engine starting  
Battery - 1x heavy duty battery for exclusive starboard engine starting  
Emergency battery coupling system permits starboard engine to start port engine if domestic batteries accidentally discharged 240 Volt  
Polarity check and earth leakage protection system  
Power points throughout the boat (fed from shore power or generator)  
Regulated battery charger  
Shore power supply

#### Cockpit

12V heavy duty weatherproof socket  
Bathing platform lights  
Cockpit seating  
Drinks holders  
Engine bay access hatch  
Fender stowage  
Gas locker  
Lazarette under cockpit seat  
Life raft stowage  
Manual bilge pump(s)  
Step for side deck access  
Teak laid cockpit  
Warp lockers

#### Engine And Performance

2x Volvo Penta IPS600 D6-435 Diesel 435 mhp each: 30 knots

#### Hullform And Construction

Design, layout and detailing by the Fairline design team  
Full length moulded spray deflectors  
Integrally moulded engine bearers  
The deck incorporates polyurethane foam cores for high-strength and excellent thermal insulation  
Transverse and longitudinal strengthening stringers throughout hull

#### Main Saloon

Companion seating opposite helm  
Companionway steps with handrail to galley and accommodation  
Dining table  
LED ceiling lights  
LED TV 32"  
Manual opening windows  
Radio with wireless connectivity  
Side board with storage for bottles and glasses  
Sofa  
Stainless steel door to cockpit with integral blind system  
Storage locker to helm seat base

Stowage locker under seating

#### Galley

2-burner gas hob, oven and grill  
Control panel for 12V/240V domestic electrical circuits  
Crockery stowage  
Extractor fan  
Hull window  
Integrated waste bin  
Lacquered cupboard doors  
Large pantry cupboard  
LED ceiling lights  
Lockers (overhead)  
Sink with hot and cold mixer tap  
Solid work surface with covers  
Tall fridge/freezer with automatic 12V/240V change-over  
Work surface lights

#### Forward Cabin

Access to shower/WC compartment  
Bedside tables  
Double bed converting to V-berth  
Full length mirror  
Hatch to foredeck  
Headboard shelf unit  
LED ceiling lights  
Lockers (overhead)  
Low level drawers  
Opening porthole(s)  
Reading lights  
Trinket locker  
Wardrobe

#### Master Cabin

Bedside tables  
Chest of drawers x2  
Full length double bed  
Full length mirror  
LED ceiling lights  
Opening porthole(s)  
Reading lights  
Wardrobe

#### Third Cabin

Full length mirror  
Full length twin bunk beds  
LED ceiling lights  
Opening porthole(s)  
Reading lights  
Wardrobe

#### Shower/wc Compartment

220V/240V shaving point  
Automatic shower tray pump-out system  
Electric silent-flush freshwater toilet  
Extractor fan  
Solid surface vanity unit locker and basin with hot and cold pressurised water  
Full set of bathroom fittings  
Full standing-height shower with integral shower tray and adaptable shower head  
Hand basin with hot and cold water  
Mirror  
Opening porthole  
Stowage locker

#### Engines And Sterngear

Automatic bilge pumps for engine bay with a manual 'on' override  
Automatic engine bay fire extinguisher system

Electric engine bay fan(s)  
 Electric trim tabs with cathodic protection  
 Engine bay lights  
 Engine room soundproofing  
 High capacity emergency manual bilge pump system with  
 changeover valves  
 Sea cocks on all inlets/outlets below waterline

#### Fuel System

Changeover valve system to permit each engine to draw fuel  
 from, and return fuel to, either tank  
 Emergency fuel shut-off valves  
 High capacity water separators and fuel filters  
 Individual fillers and vents to port and starboard  
 Twin fuel tanks  
 Freshwater System  
 Automatic, pressurised supply  
 Calorifier hot water system  
 Water tank

#### Gas

All gas burners fitted with flame failure protection devices  
 Copper, polythene sheathed supply pipe  
 Single tail feed with regulator and gas low system test meter  
 Stowage for gas bottle in self venting cockpit locker

#### Allmän information

Tillverkare:	Fairline
Modell:	Squadron 48
År:	2018
Kondition:	Begagnad

#### Motor

Motor:	Volvo IPS600 D6-435, 435 hp
Motortyp:	
Bränsletyp:	Diesel

#### Mått

Längd:	15.54 m (50.98 ft)
Bredd:	4.32 m (14.17 ft)
Djupgående:	1.17 m (3.84 ft)
Vikt:	14000 ()

#### Ackommodation

Kabiner:	0
Kojer:	0

## Bilder



Image courtesy of JD Yachts



Image courtesy of JD Yachts



Image courtesy of JD Yachts



Image courtesy of JD Yachts



Image courtesy of JD Yachts



Image courtesy of JD Yachts



Image courtesy of JD Yachts



Image courtesy of JD Yachts



Image courtesy of JD Yachts



Image courtesy of JD Yachts



Image courtesy of JD Yachts



Image courtesy of JD Yachts



Image courtesy of JD Yachts



Image courtesy of JD Yachts



Image courtesy of JD Yachts



Image courtesy of JD Yachts



Image courtesy of JD Yachts



Image courtesy of JD Yachts



Image courtesy of JD Yachts



Image courtesy of JD Yachts



Image courtesy of JD Yachts



Image courtesy of JD Yachts



Image courtesy of JD Yachts



Image courtesy of JD Yachts



Image courtesy of JD Yachts



Image courtesy of JD Yachts



Image courtesy of JD Yachts



Image courtesy of JD Yachts

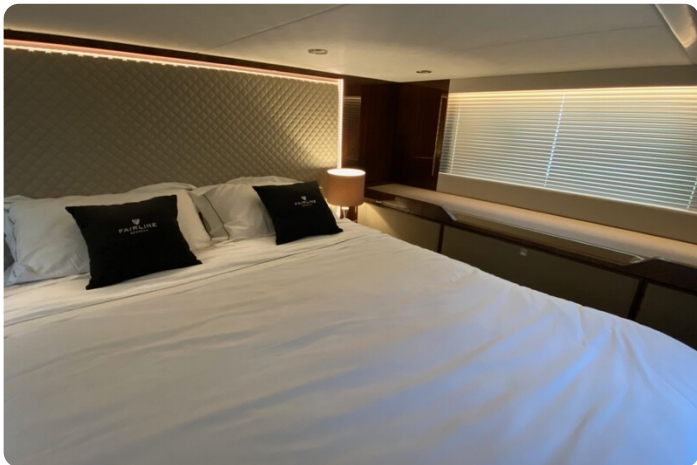


Image courtesy of JD Yachts



Image courtesy of JD Yachts



Image courtesy of JD Yachts



Image courtesy of JD Yachts



Image courtesy of JD Yachts



Image courtesy of JD Yachts



Image courtesy of JD Yachts

**JD YACHTS LIMITED**

80 THE ESPLANADE

DT4 7AA WEYMOUTH

Storbritannien

Telefon: +44 (0) 1305 766504

<http://jdyachts.com>



 YACHTS.