



# Fairline Targa 52 GT

£299,995 • Essex United Kingdom (UK) • Used • 2009

## Presented by

Peter Marchant  
Phone: 44(0)1206302003

**Morgan Marine**  
The Boatyard, Shipyard  
Estate  
CO7 0AR Colchester  
United Kingdom (UK)

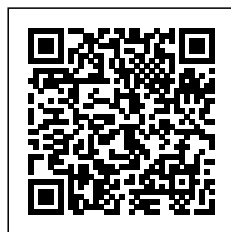


## Details

Make:	Fairline
Model:	Targa 52 GT
Year:	2009
Condition:	Used
Engine type:	
Fuel type:	Diesel
Length:	15.98 m (52.43 ft)
Beam:	4.27 m (14.01 ft)
Cabins:	0
Berths:	0



Morgan Marine



7zea.com

# Description

EN

2009 Fairline Targa 52 GT is a superb example of this highly regarded sports cruiser, combining striking design, impressive performance, and luxurious accommodation. Powered by twin Volvo Penta D12-800 inboard stern drive diesel engines with Approx 720 hours!- This boat benefits from extremely powerful and reliable propulsion, delivering exhilarating performance and effortless cruising. These high-performance engines provide strong acceleration and smooth, confident handling, allowing the boat to cruise comfortably at around 26 knots with a top speed of approximately 36 knots, perfectly reflecting the performance the Targa range is renowned for. Having had just two owners from new, this boat has been extremely well cared for and is well known locally as a well-loved example presented in brilliant condition. The spacious cockpit is designed with entertaining and comfort in mind, featuring generous wrap-around seating with a cockpit table, along with a fully equipped wet bar and grill. A large electric sliding sun cockpit roof allows the space to be opened up on warmer days, while the bow sun pad offers the perfect place to relax and enjoy the surroundings. Below deck, the accommodation is both stylish and practical, with three large double berths providing comfortable sleeping space for family and guests. The wrap-around galley is thoughtfully designed to maximise both storage and usability, making extended stays onboard effortless. The boat is well equipped with navigation and safety electronics including twin Raymarine E120 Chartplotter displays, Raymarine HD Radar, a Raymarine AIS250 Receiver, and Raymarine VHF radio. Manoeuvring is made simple thanks to both bow and stern thrusters. Additional onboard comforts include a 13.5kVA generator and reverse cycle air conditioning, ensuring the boat remains comfortable and fully powered whether at anchor or in the marina. The large engine bay also provides excellent access for maintenance and servicing - Recently serviced in April 2026! Overall, this Fairline Targa 52 GT represents a fantastic opportunity to acquire a beautifully maintained, powerful, and highly specified sports cruiser that perfectly balances performance, luxury, and practicality. Viewings are highly recommended to fully appreciate the condition and quality of this exceptional boat.

Deck: GRP white hull with striking blue sides. Newly antifouled hull in 2026. Fenders and lines. Electric windlass with anchor, chain and rope - Control from helm. Stainless Steel mooring cleats. Stainless Steel rails from stern to bow area with guard wire. Bow port and starboard fender lockers. Fender baskets. Enclosed canopy for stern. Bathing platform with fold down swim ladder. Teak decking. Bow sun pad seating with removeable cushions. Large electric sliding sun cockpit roof. Grab handles. Stern locker to access shore power. Stern large storage locker for Liferaft. Stern lift up electric garage - perfect for storing dinghies. Steps up to walk around port and starboard side of the boat. Transom shower with hot and cold water. Window covers. 2.9m letterbox Passerelle. Radar arch.

Cabin: Transom door with steps down into cabin area with large headroom. C-shaped ivory leather saloon cushioned seating with backrest and table which converts into double berth. TV in saloon area which rises. Large underfloor storage area in saloon. Overhead lockers. Large wrap around galley area in Avonite Dark Roast with double sink, electric hob, oven, full size fridge with freezer, and storage lockers. Forward master cabin with island double berth, deck hatch with blinds, 2x large portholes. Ensuite with electric toilet with holding tank with discharge to sea and deck, sink, storage, mirror and stand up wrap round shower. Port side stern cabin with double berth with lots of storage including hanging and overhead. Dash skylight to port cabin. Starboard side stern cabin with double berth with infill cushion and with again lots of storage. (Both step down into cabins with large headroom). Lighting in cabins. Interior carpet in Gigant sand colour. Wood venetian blinds in

all cabins. Upholstery in Elegance range.

Cockpit: Transom gate with teak steps up to main cockpit area. Port side double sunbed with cushions, Starboard side single sunbed with cushions with engine compartment access underneath with ladder. Port side U-shaped cockpit seating area with wooden teak table which fold downs into large sun bed area. Starboard side galley area with electric grill, ice maker, fridge, sink with wet bar. Starboard side cockpit seating with backrest. Co pilot port side L-shaped seating with backrest. Glove box. Port side bench double helm seat with dash and engine controls. Windscreen with 2x windscreen wipers. Large windows with good all round visibility. Cup holders.

Electronics: 2x Raymarine E120 chart plotters. Raymarine Autohelm and depth sounder. Raymarine Radar HD. Raymarine VHF radio. Raymarine AIS250 receiver. NASA Navtex Clipper. Shore power. Control panel. Compass. Engine gauges. - Waterproof socket to BBQ. Horn. JVC MP3 player with speakers.

Machinery: Twin Volvo Penta D12-800 inboard stern drive diesel engines in large engine bay - 12.8 litre, in-line 6-cylinder. Recently serviced in April 2026. Bow and stern thruster. 13.5kva Generator. Reverse cycle air conditioning. Automatic trim tabs. Manual and automatic bilge pump. Fuel capacity - 1860 litres. Water capacity - 400 litres.

## General information

Make:	Fairline
Model:	Targa 52 GT
Year:	2009
Condition:	Used

## Engine

Engine type:	
Fuel type:	Diesel

## Measurements

Length:	15.98 m (52.43 ft)
Beam:	4.27 m (14.01 ft)
Deep:	1.09 m (3.58 ft)

## Accommodation

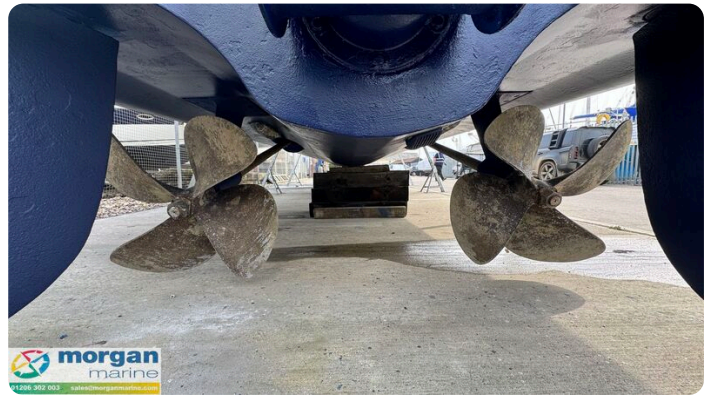
Cabins: 0

Berths: 0

## Images



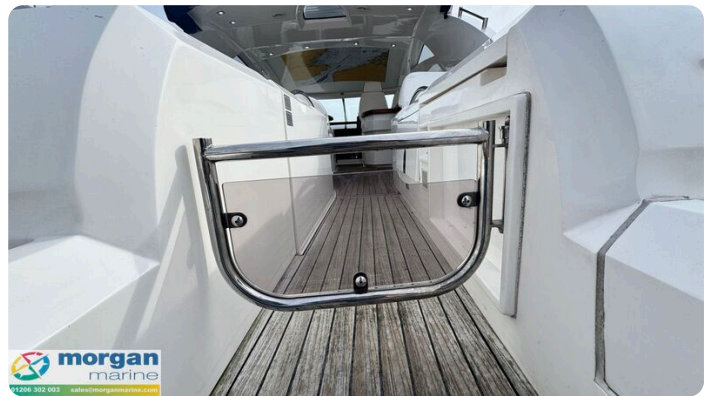


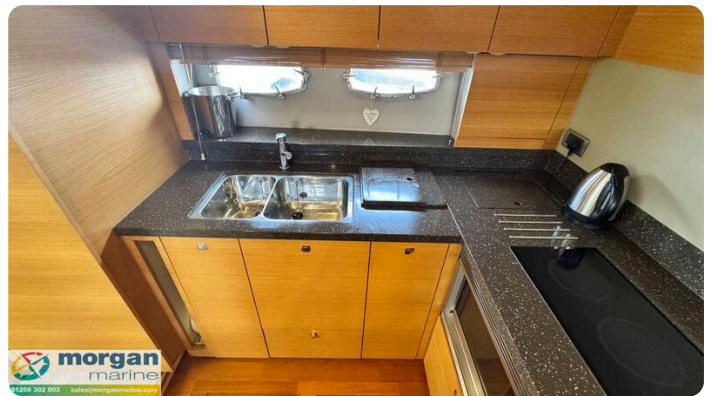




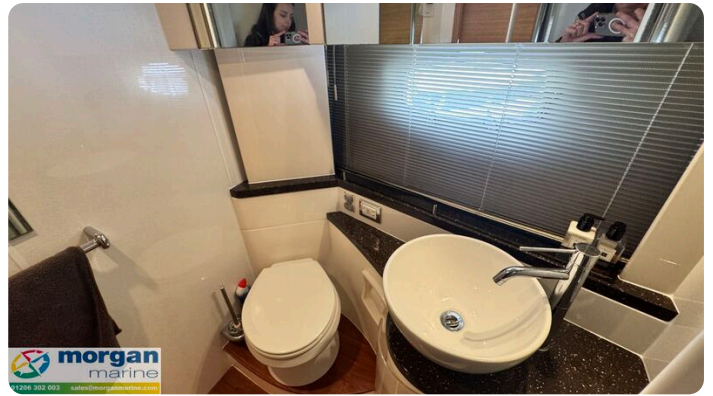


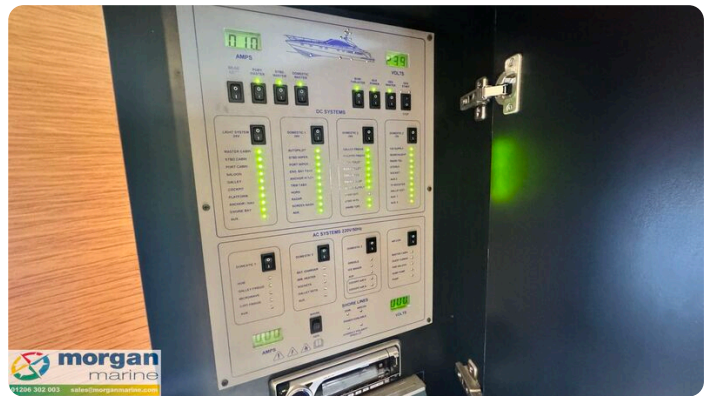
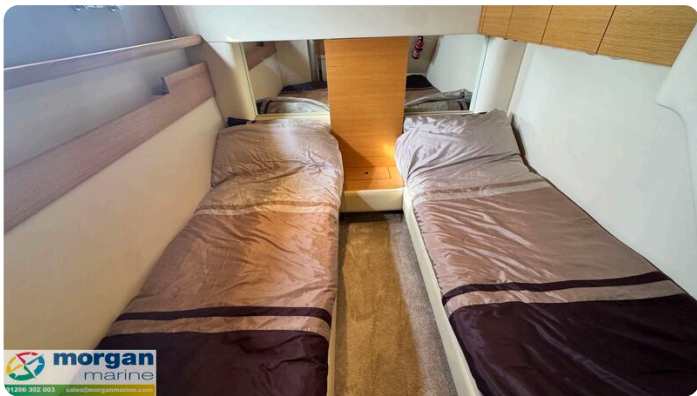


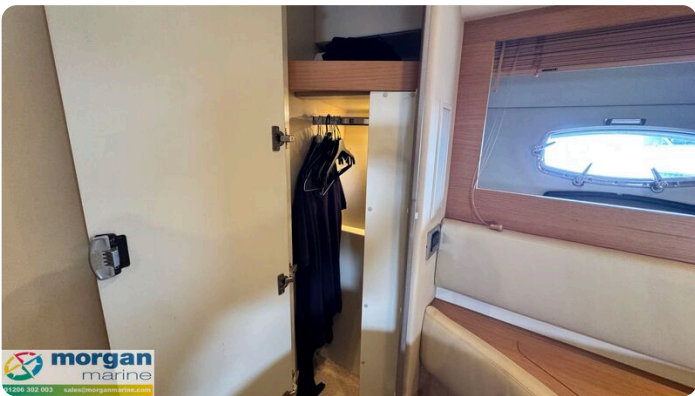














**Morgan Marine**

The Boatyard, Shipyard Estate  
CO7 0AR Colchester  
United Kingdom (UK)

Phone: 44(0)1206302003

<https://morganmarine.com>

