



Intrepid 327 Center Console

US\$219,900 • Palm Beach Amerikas Förenta Stater • Begagnad • 2020

Presenterad av

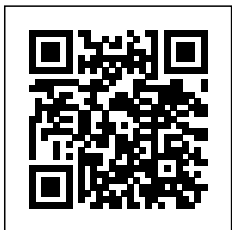


Phone: 1-561-612-7076

Nautical Ventures
50 SOUTH BRYAN RD.
FL 33004 DANIA BEACH
Amerikas Förenta Stater

Detaljer

Tillverkare:	Intrepid
Modell:	327 Center Console
År:	2020
Kondition:	Begagnad
Motortyp:	
Bränsletank:	1052.34 l (278.00 gal)
Längd:	32 ft (9.75 m)
Bredd:	9 ft (2.74 m)
Vattentank:	94.64 l (25.00 gal)



Nautical
Ventures



7zea.com

Beskrivning

Available by Appointment: Palm Beach

This 2014 Intrepid 327 has sweet lines, is fast and fuel-efficient. She's been captain-maintained since new and it shows. The twin Yamaha 300 HP four-stroke outboards only has 748 hours and is the preferred package offering great performance, comfort, and stability, whether cruising with friends and family or chasing fish offshore.

The helm console features a double Garmin GPS one that is 16" and the other is 9", Fusion stereo system with JL speakers, ICOM VHF Radio, Simrad autopilot, MAXWELL Electric Windlass, Bennett digital trim tab Indicators with auto retract, Compass, stainless steel tilt steering wheel, Yamaha 6YC Display, instrumentation panel with switches, bow thruster, and with all the convenience of cup holders, glovebox and a windshield for protection from the wind and elements

Other features include Fiberglass T-Top, Yacht Tow Eye, console cover, hardtop with outriggers, hullside dive door, fold-down swim ladder, Vetus bow thruster, 110V charging system, freshwater washdown, saltwater washdown, solar panel trickle charger, and bow handrail.

Engine 1

- Yamaha
- F300
- Outboard 4 Stroke
- 300.00 HP
- Gas/Petrol
- 748.00 Hours

Engine 2

- Yamaha
- F300
- Outboard 4 Stroke
- 300.00 HP
- Gas/Petrol
- 748.00 Hours

Selected features

- Yacht Tow Eye
- Console Cover
- Hard Top w/Outriggers
- Side Door
- Fusion MS-RA205 with JL Audio Speakers
- ICOM VHF IC-M506
- SIMRAD AP24 Auto Pilot
- MAXWELL Electric Windlass
- Vetus Bow Thruster
- Yamaha 6YC Display
- Garmin GPS 16"
- Garmin GPS 9"
- Bennett Trim Tabs
- 110V Charging System
- Fresh Water Wash Down
- Salt Water Wash Down
- Stainless Steel Tilt Steering Wheel
- Compass
- Solar Panel Trickle Charger

Features

- 327 Bullet Console

- Transom Door
- Dive Platforms
- Tinned Wiring
- Navigation Lights
- Auto Bilge Pump
- Breaker Panel Switches
- Solid Stainless Steel Hardware
- Guttered Cockpit Hatches with Self Bailing Cockpit
- PVC Foam Core Vacuum-bagged Non-Woven Multi-Directional & Uni-Directional Fibers all Hand Laid
- Pull-up Deck, Springline & Stern Cleats
- Deck Storage/Rod Lockers Forward
- Console Windshield
- Integral Motor Bracket
- Insulated Fishbox with Thru Transom Ball Valve & Macerator
- Bow Eye
- Non-Skid Deck & Gunwales
- Aluminum Fuel Tank
- Heavy Duty Vinyl Rubrail
- Recessed Battery Switch Panel
- Trim Tabs
- Dry Lockable Storage Compartment Forward
- Anchor Roller Thru Bow
- Plexi Trim Package
- Compass
- Fold Down Swim Ladder
- Bow Handrail

Allmän information

Tillverkare:	Intrepid
Modell:	327 Center Console
År:	2020
Kondition:	Begagnad

Motor

Motortyp:	
Bränsletank:	1052.34 l (278.00 gal)

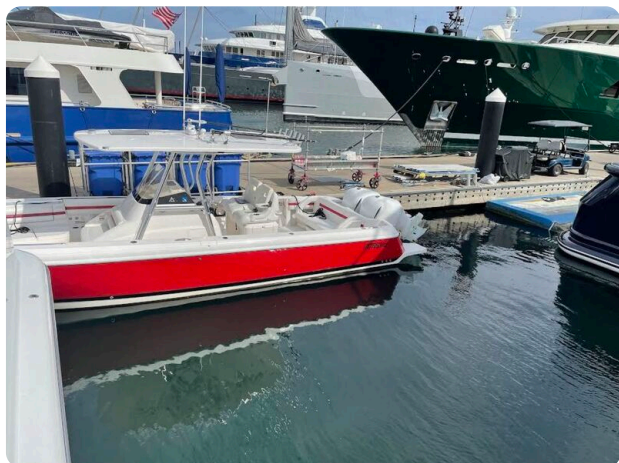
Mått

Längd:	32 ft (9.75 m)
Bredd:	9 ft (2.74 m)

Akkommodation

Vattentank: 94.64 l (25.00 gal)

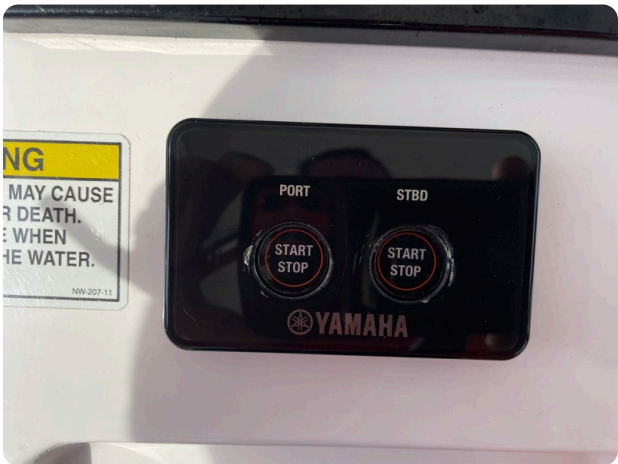
Bilder

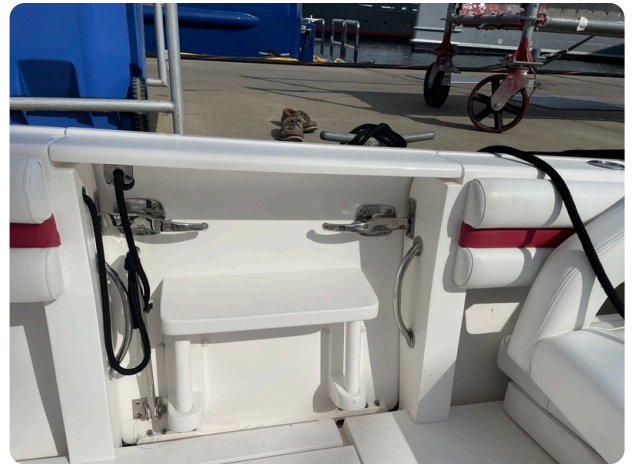
















Nautical Ventures
50 SOUTH BRYAN RD.
FL 33004 DANIA BEACH
Amerikas Förenta Stater
Telefon: 1-561-612-7076
<https://www.nauticalventures.com>

