



Jeanneau Merry Fisher 645

£29,995 • Brightlingsea United Kingdom (UK) • Used • 2011

Presented by

Peter Marchant
Phone: 44(0)1206302003

Morgan Marine

The Boatyard, Shipyard
Estate
CO7 0AR Colchester
United Kingdom (UK)

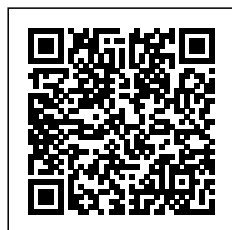


Details

| | |
|--------------|-------------------|
| Make: | Jeanneau |
| Model: | Merry Fisher 645 |
| Year: | 2011 |
| Condition: | Used |
| Engine: | , 300 hp |
| Engine type: | |
| Fuel type: | Gasoline |
| Length: | 6.43 m (21.10 ft) |
| Beam: | 2.5 m (8.20 ft) |
| Cabins: | 0 |
| Berths: | 0 |



Morgan Marine



7zea.com

Description

EN

Just in at Morgan Marine - a 2011 Jeanneau Merry Fisher 645, one of the most sought-after wheelhouse cruisers in its class. Powered by a reliable and efficient Suzuki 115hp four-stroke outboard engine with approximately 240 hours of use, this versatile boat is perfectly suited for both relaxing cruises and action-packed adventures. Maintained with a consistent service history and complete with full title paperwork, this Merry Fisher 645 comes fully equipped with a host of desirable features. Enjoy the comfort of a full cockpit canopy with an aft closing kit, stylish bench seating with a table in the cockpit, a spacious saloon area, and a compact galley complete with sink. Below deck, you'll find a generous double berth with a Porti Potti toilet discreetly located beneath berth. Ideal for family outings, fishing trips, water sports, or leisurely cruising, this boat delivers an excellent balance of performance, economy, and reliability. The proven hull design ensures superb sea-keeping abilities, making every trip enjoyable and safe. Early viewing is highly recommended - we believe this could be one of the finest examples of a Merry Fisher 645 currently available in the UK. Don't miss your chance to own a standout model from a respected brand.

Cabin: Forward v-shaped cushioned berth with infill. Double berth conversion in saloon. Porti Porta toilet under berth. Deck hatch.

Cockpit: Wheelhouse with aft sliding door and roof hatch. Port side bench style seating with table (converts to berth). Helm position with pilot seat, steering wheel and engine controls including compass and Suzuki gauges (trim / fuel / RPM). Galley with sink to starboard side. Interior curtains. Cockpit bench style seating with removable cushions and backrest - plus cockpit table with cup holders.

Electronics: Lowrance Elite-5 Chartplotter. Cobra VHF radio. Starboard windscreen wiper. Navigation lights. Suzuki engine gauges. Anchor light. Isolator switch. Compass. New battery 2024.

Machinery: Suzuki DF115hp four stroke outboard with power trim and tilt. Fuel capacity - 136 litres. Last full service - March 2025.

General information

| | |
|------------|------------------|
| Make: | Jeanneau |
| Model: | Merry Fisher 645 |
| Year: | 2011 |
| Condition: | Used |

Engine

| | |
|--------------|----------|
| Engine: | , 300 hp |
| Engine type: | |
| Fuel type: | Gasoline |

Measurements

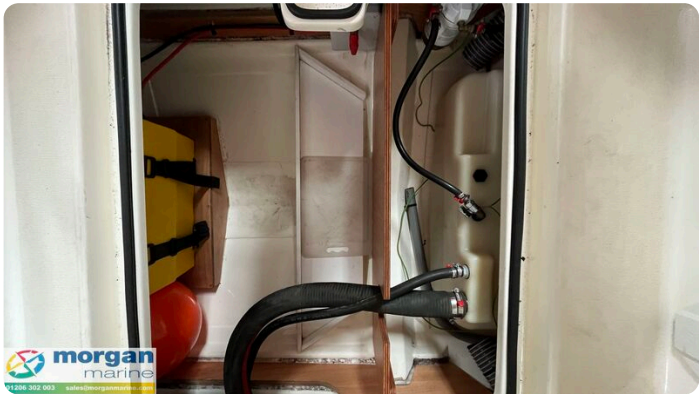
| | |
|---------|-------------------|
| Length: | 6.43 m (21.10 ft) |
| Beam: | 2.5 m (8.20 ft) |
| Deep: | 0.53 m (1.74 ft) |
| Weight: | 0 () |

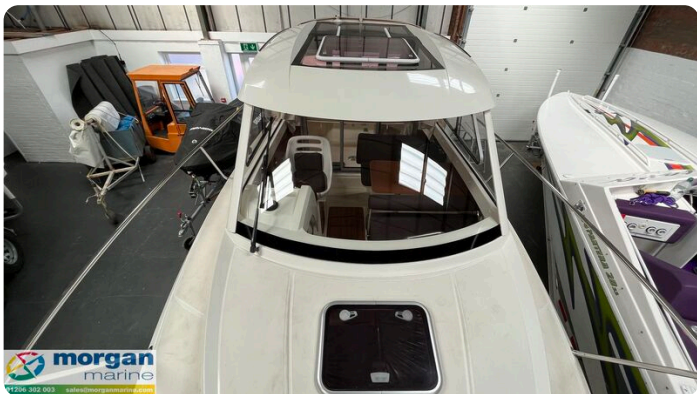
Accommodation

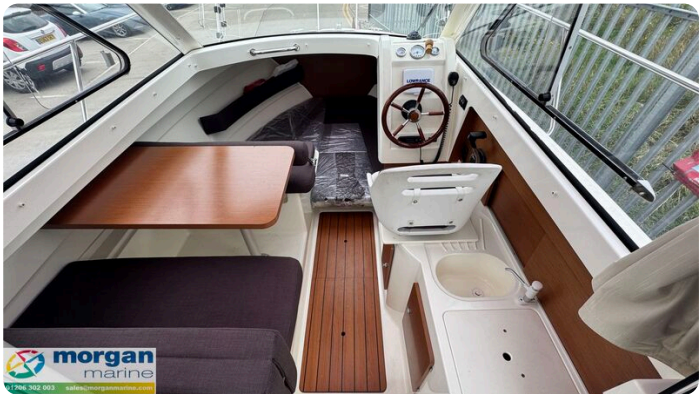
| | |
|---------|---|
| Cabins: | 0 |
| Berths: | 0 |

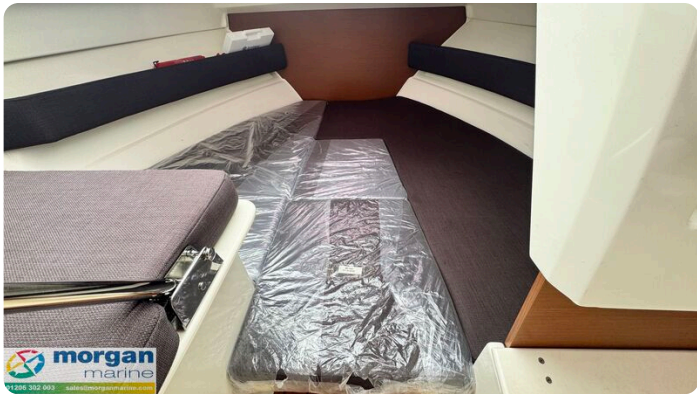














Morgan Marine

The Boatyard, Shipyard Estate
CO7 0AR Colchester
United Kingdom (UK)

Phone: 44(0)1206302003

<https://morganmarine.com>

