



Jeanneau Merry Fisher 895 Sport - Offshore

£174,500 • Brightlingsea United Kingdom (UK) • New • 2024

Presented by

Peter Marchant
Phone: 44(0)1206302003

Morgan Marine

The Boatyard, Shipyard
Estate
CO7 0AR Colchester
United Kingdom (UK)



Details

Make:	Jeanneau
Model:	Merry Fisher 895 Sport - Offshore
Year:	2024
Condition:	New
Engine:	, 435 hp
Engine type:	
Fuel type:	Gasoline
Length:	8.92 m (29.27 ft)
Beam:	2.99 m (9.81 ft)
Cabins:	0
Berths:	0



Morgan Marine



7zea.com

Description

EN

Jeanneau Merry Fisher 895 Sport - Offshore (transom designed for larger engines and a larger fuel capacity) - with a saving of over £15,000 on the RRP. Powered by twin Suzuki DF200 APX (Drive By Wire) and bow thruster for increased manoeuvrability. Over £31,000 extras including Trim Level Premiere, Comfort Pack, Garmin Electronics, folding side benches in cockpit, bow cushions, curtains and diesel heating. CE category B for 6 and C for 10. Delivered to Morgan Marine with full PDI / commissioning / installation and hand over package, 3 piece name set + prepared and antifouled. 2024 model available to order for UK delivery - alternative specifications in stock at Morgan Marine. NB - library photos may not reflect specification of boat.

Deck: Electric windlass (with control from helm position), self draining anchor locker and bow roller + anchor and chain. Self draining cockpit. 2x forward chocks + 2x forward + 2x middle + 2x aft mooring cleats. Open pulpits + cockpit side rails + cockpit aft rails. Mooring kit (fenders and ropes). Luxury folding aft cockpit bench with cushions (also slides forward when engines are lifted up) + folding benches on port and starboard sides. Deck locker with ladder. Swim platforms with folding boarding ladder and cockpit barriers. Fishing rod holders. Fish cutting table. Cockpit shower (cold water). L-shape cushioned seating in bow.

Cabin: Forward cabin with 2x single berths, shelves, wardrobe, hull + deck windows, opening porthole and hatch to deck. Aft cabin with double berth, lockers, opening porthole and hull + deck windows. Toilet compartment with marine toilet (80L holding tank), opening porthole, washbasin (pressurised heated water) and shower. Diesel forced air heating. Curtains for wheelhouse and cabins.

Cockpit: Wheelhouse with aft sliding door, port side window, inverted windscreen (the top is further forward than the bottom) - with port and starboard windscreen wipers + screen wash, manual sliding roof and starboard side door. Starboard side helm position with full engine controls, electronics, compass, storage net and bolster seat. Co-pilot bench - converts to seating at saloon table. Port side saloon with table and aft cushioned bench seat (lockers under). Sink (pressurised + heated water) in front of co-pilot position. Starboard side cockpit bar with 60L fridge (12v).

Electronics: Garmin Electronic Pack: Garmin echoMAP UHD2 92sv touch and GT15M-IH transducer. Shore power + battery charger. Water heater. LED lights in wheelhouse, cabin and cockpit floor. Navigation lights. Rokk wireless phone charger flush mounted on dash.

Machinery: Twin Suzuki DF200 APX - Drive By Wire. Bow thruster. Lenco electric trim tabs. Hydraulic steering. Diesel forced air heating. Manual and electric bilge pumps. Fuel capacity: 2x 300L (with outside fill). Water capacity: 100L.

General information

Make:	Jeanneau
Model:	Merry Fisher 895 Sport - Offshore
Year:	2024
Condition:	New

Engine

Engine:	, 435 hp
Engine type:	
Fuel type:	Gasoline

Measurements

Length:	8.92 m (29.27 ft)
Beam:	2.99 m (9.81 ft)
Deep:	0.62 m (2.03 ft)
Weight:	0 ()

Accommodation

Cabins:	0
Berths:	0

Images



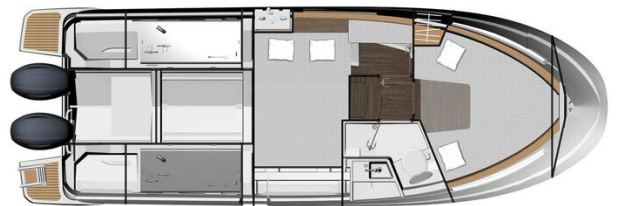
Jeanneau Merry Fisher 895 Sport - Offshore



Jeanneau Merry Fisher 895 Sport - Offshore - galley in front of co-pilot seat



Jeanneau Merry Fisher 895 Sport - Offshore - layout diagram of wheelhouse seating



Jeanneau Merry Fisher 895 Sport - Offshore - layout diagram of cabins



Jeanneau Merry Fisher 895 Sport - Offshore - helm position



Jeanneau Merry Fisher 895 Sport - Offshore - toilet compartment with marine toilet



Jeanneau Merry Fisher 895 Sport - Offshore - aft cabin



Jeanneau Merry Fisher 895 Sport - Offshore - forward cabin



Jeanneau Merry Fisher 895 Sport - Offshore - wheelhouse interior



Jeanneau Merry Fisher 895 Sport - Offshore - diagram of side view



Jeanneau Merry Fisher 895 Sport - Offshore - starboard side deck



Jeanneau Merry Fisher 895 Sport - Offshore - render of overhead view



Jeanneau Merry Fisher 895 Sport - Offshore - render of aft cockpit with benches folded down



Jeanneau Merry Fisher 895 Sport - Offshore - bow seating



Jeanneau Merry Fisher 895 Sport - Offshore - on the water



Jeanneau Merry Fisher 895 Sport - Offshore - great for fun with paddleboards

Morgan Marine

The Boatyard, Shipyard Estate
CO7 0AR Colchester
United Kingdom (UK)

Phone: 44(0)1206302003

<https://morganmarine.com>

