



Jeanneau NC 11

£230,000 • Brightlingsea United Kingdom (UK) • Used • 2018

Presented by

Peter Marchant
Phone: 44(0)1206302003

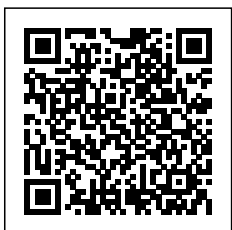
Morgan Marine

The Boatyard, Shipyard
Estate
CO7 0AR Colchester
United Kingdom (UK)

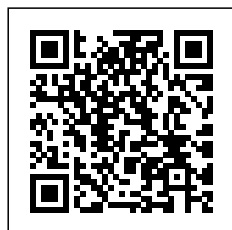


Details

Make:	Jeanneau
Model:	NC 11
Year:	2018
Condition:	Used
Engine:	, 435 hp
Engine type:	
Fuel type:	Diesel
Length:	11.15 m (36.58 ft)
Beam:	3.7 m (12.14 ft)
Cabins:	0
Berths:	0



Morgan Marine



7zea.com

Description

EN

Jeanneau NC11 Just in at Morgan Marine - well desired 2018 Jeanneau NC11 with Twin Volvo D3-200hp Diesel engines with a huge bursting specification list including : Raymarine Axiom 12inch Chartplotter, Electric trim tabs, Solar panels, Generator, Raymarine Radar, 6 persons life raft and much much more! This boat has been meticulously cared for by her current owners - incorporating a fantastic service history and no expense spared on maintenance - you will struggle to find a cleaner example with only one owner from new. CE category B for 10 or C for 10. Whether it is for marina hopping or a week away - this boat will accommodate the family. Full suite of electronics, twin diesel engines plus bow thruster which offer great performance and manoeuvrability - plus diesel heating for those cooler winter days. This boat benefits from all the must have extras. Just recently had a full cut and polish plus antifoul in December 2023! Early viewing is essential!

Deck: 60m Galvanised anchor chain with electric windlass and self draining anchor locker. Chain counter with chain guard. Stainless steel rail in anchor locker. Stainless steel opening pulpit. Cockpit and sport top hand rails. Forward, midship and stern mooring cleats. Cockpit aft closing canopy in Dark Smoke. Sliding rear cockpit sofa with locker in Mac White. Cockpit shower. Swim platform with ladder. Under floor storage. Mooring kit (fenders and ropes). Anchoring kit. Stern teak deck. Flag pole with flag. Storage organizer in leatherette. Front sundeck cushions in Beige/Ice premium + lifting backrest. 6 person life raft with 4x life jackets.

Cabin: Forward cabin - double berth, windows, deck hatch, storage, interior lights and removable carpet. 2nd cabin - 2 single berths (convertible to double), hull windows, storage and removable carpet. Heads compartment with electric sea water toilet, separate shower. Large saloon with table, sliding doors, opening windows and electric sliding roof. Saloon convertible to double berth. Galley - 2 ring gas burner, oven, sink and 80L fridge + cupboards and storage. Walnut wood interior woodwork. Saloon upholstery in Marlin Pure White. Chrome front on plugs and switches. Rear seat folding down to sun pad with sun bed cushions. Centre wheelhouse carpet strip.

Cockpit: Windscreen wipers + screen wash + defogger. Compass. Horn. Cockpit handrails. Sliding rear cockpit sofa folding down to sun pad with sun bed cushions and lockers. Wood cockpit floor. Gas locker with gas bottle.

Electronics: Raymarine Axiom 12inch Chartplotter with real vision Navionics, Fish finder and depth sounder. Raymarine Radar and mounting mast. Aerial with splitters and AIS. Raymarine VHF RAY260 radio. Fusion audio system with speakers. Auto pilot. Additional 115 amp Battery. 25K Sine Wave Inverter. LED lights in cockpit and side deck. 100W Solar panel and input controller. Glowmax TV Aerial connect to 12V. Remote control search light. UK sockets with aerial point. Tube heaters - (2x engine bay, 1x Clarifier tank, and under forward berth). Electric and manual bilge pumps. Shore power + 12v / 220v sockets. Navigation lights.

Machinery: Twin Volvo D3-200hp Diesel engines - Fully serviced till end of 2023. Webasto diesel heater with outlets in all rooms. Bow thruster. 4kw generator. Electric trim tabs. Bilge storage. Volvo link to Raymarine. Connector for direct water supply from shore. Engine bay with anodised protector. Fuel capacity: 720L. Water capacity 250L. Holding tank capacity: 80L.

General information

Make:	Jeanneau
Model:	NC 11
Year:	2018
Condition:	Used

Engine

Engine:	, 435 hp
Engine type:	
Fuel type:	Diesel

Measurements

Length:	11.15 m (36.58 ft)
Beam:	3.7 m (12.14 ft)
Deep:	1 m (3.28 ft)
Weight:	0 ()

Accommodation

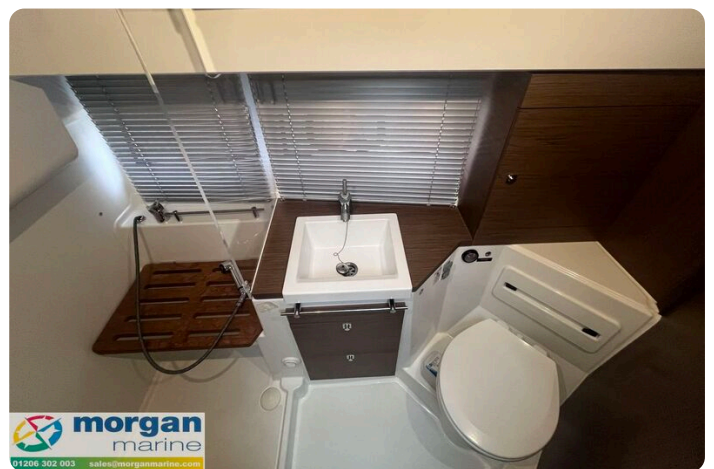
Cabins:	0
Berths:	0























Morgan Marine

The Boatyard, Shipyard Estate
CO7 0AR Colchester
United Kingdom (UK)

Phone: 44(0)1206302003

<https://morganmarine.com>

