



# Kingfisher 26

£995 • Brightlingsea United Kingdom (UK) • Used • 1969

## Presented by

Peter Marchant  
Phone: 44(0)1206302003

## Morgan Marine

The Boatyard, Shipyard  
Estate  
CO7 0AR Colchester  
United Kingdom (UK)

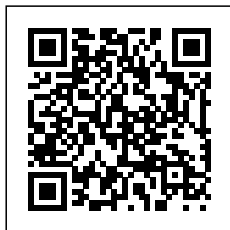


## Details

Make:	Kingfisher
Model:	26
Year:	1969
Condition:	Used
Engine:	, 435 hp
Engine type:	
Fuel type:	Diesel
Length:	7.9 m (25.92 ft)
Beam:	2.3 m (7.55 ft)
Cabins:	0
Berths:	0



Morgan Marine



7zea.com

## Description

EN

Kingfisher 26 Pharmacia - project boat. Built in 1969, GRP construction with grey topsides, twin bilge keels, self draining aft cockpit with tiller steering. It has a masthead Bermudad sloop rig, and her interior has 4 berths in 2 cabins with around 6ft headroom. This is a project boat for the right Buyer. The cabin requires attention as there is some rain water damage, but for this price we believe Pharmacia to be a great buy. Viewing highly recommended - full paperwork of boat can be seen. Why not contact Morgan Marine to talk further about this Bargain Bilge Keeler.

Deck: Stainless steel Pushpit, pulpit and guard wires. Tiller steering. Cleats. Bow roller. Rigging requires attention.

Cabin: 4 berths in 2 cabins including 6ft V shaped berths in the separate forebrain. Port and starboard side storage. 2x Berths in saloon.

Cockpit: Bench style seating. Storage under bench seating. Tiller steering. Considerable cockpit space for both captain and crew.

Electronics: N/A

Machinery: Kubota 17hp 3 cylinder inboard diesel engine (new in 1985 and rebuilt in 1996). 30 Gallon fuel capacity in 2x tanks. Running conditions can not be confirmed.

### General information

Make:	Kingfisher
Model:	26
Year:	1969
Condition:	Used

### Engine

Engine:	, 435 hp
Engine type:	
Fuel type:	Diesel

### Measurements

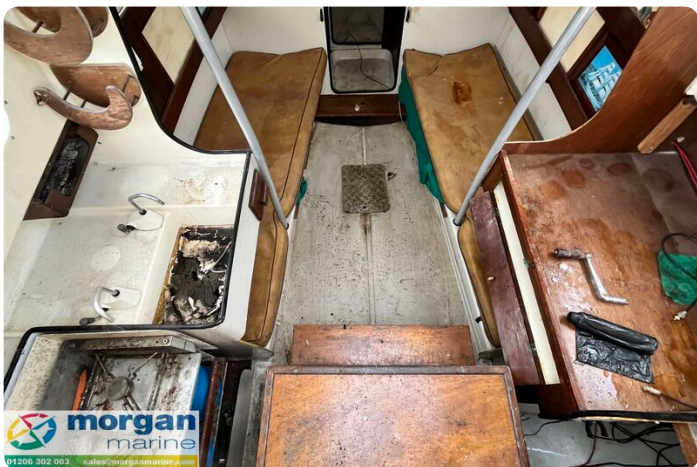
Length:	7.9 m (25.92 ft)
Beam:	2.3 m (7.55 ft)
Deep:	0.9 m (2.95 ft)
Weight:	0 ( )

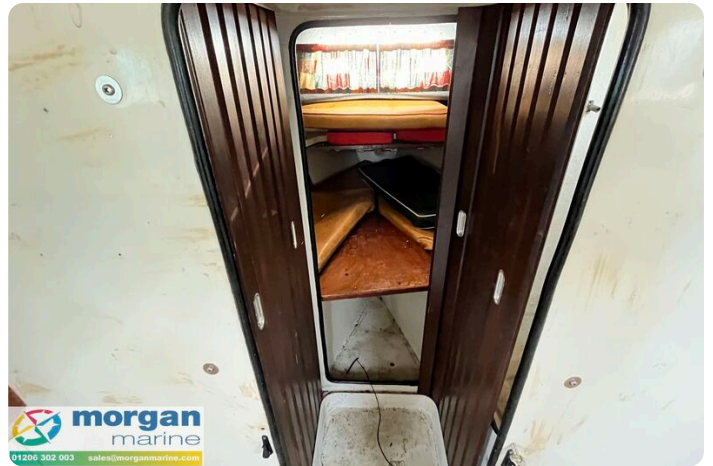
### Accommodation

Cabins:	0
Berths:	0

## Images









**Morgan Marine**

The Boatyard, Shipyard Estate  
CO7 0AR Colchester  
United Kingdom (UK)

Phone: 44(0)1206302003

<https://morganmarine.com>

