



# Pacific S205/225

€840,000 • Naples Netherlands • Used • 2011

## Presented by

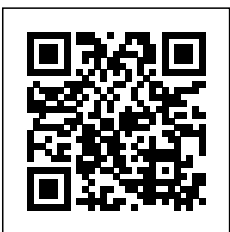
Bram de Groot  
Phone: 0031(0)478450015

**GrandYachts BV**  
Geijsterseweg 10  
5861 BL Wanssum  
Netherlands

**GRANDYACHTS®**

## Details

Make:	Pacific
Model:	S205/225
Year:	2011
Condition:	Used
Hull:	Steel
Engine:	Volvo Penta D9-500 2011
Engine type:	Inboard engine
Fuel type:	Diesel
Fuel tank:	4500 l (1,188.78 gal)
Length:	22.5 m (73.82 ft)
Beam:	5.65 m (18.54 ft)
Cabins:	0
Berths:	4
Watertank:	1500 l (396.26 gal)



GrandYachts BV



7zea.com

# Description

## EU- VAT paid!!

Offered by the **official Pacific dealer** this Pacific S205/S225 comes factory approved. Can be delivered **including CVO** in The Netherlands or country of your choice.

The first picture shows the actual yacht displayed in Hall 6 from the Düsseldorf Boatshow back in 2011 where this fully loaded beauty was on show. Ask us anything as we know the yacht inside out!

**Location: Naples / Italy** (we transport anywhere)

This magnificent **first owner** 22.5 metre Pacific S **Lady Rose** is best described as a true passage maker and is built to an extreme level of quality that can only be found within Dutch craftsmanship from builders like **VanderValk** and **Pacific**.

Lady Rose is equipped with the Volvo **D9-500** leaving plenty power for the high power PTO's that is used by the hydraulic bow and stern thrusters. A third PTO is coupled to her high power generator to gain even more power than necessary.

Lady Rose sleeps 6 in two double staterooms and a twin, all with ensuite central heated bathrooms with shower, wash basins and toilets. The owners cabin fully aft has a full beam bathroom with a bidet as extra and a very large stern mounted window/escape hatch. On port side there is a crew cabin with bunk beds and an ensuite bathroom. The entrance to the crew cabin is found on port side in the superstructure and is separated from the owners/guests interior.

## Wheelhouse

Lady Rose's air-conditioned wheelhouse gives you comfort during your new ocean adventures, her thermic-line double glazing withstands the most extreme conditions and a central fresh air dorade box ventilation system provides fresh air in all compartments when all glazing and portholes have to be closed. Double watertight doors in the wheelhouse give easy access to both side-decks. A large chart-table with twin lighted gooseneck lights and ample space for laptops is found at the helm station.

At the helm station all equipment needed for comfortable and safe cruising is placed within an arm length. From the double Raymarine screens to the fully proportional bow -and stern thrusters with 'hold' functionality to the switching board are all packed in a beautifully designed leather console.

Behind the double Recaro helm seats is the ample spaced salon and on port side you find a full length cabinet that houses a sink, fridge, electric up and down LED-tv, the Bose sound system and other entertainment features.

## Galley - dinette

Frankly, the word galley does an injustice to this kitchen. It's a kitchen like at home and not a galley. All kitchen appliances are from Bosch, such as the ceramic hob, the digital-electric oven, the dishwasher and extractor hood. The comfort refrigerator is from Liebherr.

The position is located on the port side and while sailing the cook has visual contact with the captain and with any guests who are in the dinette opposite. Of course there is also a direct view to the outside from the kitchen.

## Bathing platform

She measures a respective 22.5 metre of which 2 metres is designed to go up and down under water. Launching your big

RIB tender of a couple of hundred kilograms is idiot simple and submerging the platform just a bit makes boarding the vessel after a nice swim easy for everyone.

## Main features

- Hydraulic stabilising system
- Hydraulic up / down bathing platform
- Hydraulic 5 metre gangway
- Hydraulic windlass with 100kg anchor + 120 metre chain (13mm)
- Volvo Penta D9-500 with twin hydraulic PTO's (1800 hours only!)
- Volvo EVC electronic gearshift / throttle
- Heavy Duty 24V alternators
- Reverse cycle airconditioners
- Insulated hull and superstructure
- Maintenance free water lubricated propeller shafts.
- Bose sound system in wheelhouse
- Bose sound system in living
- Synchronized wiper controls with interval and wash installation
- Power steering
- 2 x Lewmar stern winches
- 2 x Swimming ladders
- Mastervolt Whisper 16kw generator
- Mastervolt Mass 24/100 generator battery charger
- Mastervolt engine battery charger
- Mastervolt Ultra 24/3500-100 inverter
- 2xMastervolt 10A reducers
- Mastervolt Mass GI 3.5 A/C isolation transformer
- Climma Vega MKII air conditioning system with 2 chillers
- Kabola HR central heating + hot water tap (endless)
- Idromar MC3G watermaker + water softener
- KVK M5 Tracvision TV/SAT System
- 5 Sharp Tv + Bose Sound System
- Electric sliding roof rear deck
- Electric central vacuum system
- Broan trash compactor full emergency equipment
- Deck wash installation
- New batteries installed 2021
- New painted 2022
- Built under R.I.N.A CE-A class (ocean-going)

## Navigation

- Raymarine RAY240E VHF
- Raymarine TriData Autohelm ST60
- Raymarine (2x) multifunction plotter Raymarine E120W
- Raymarine radar pathfinder
- Raymarine autopilot Autohelm ST6002
- Smart Controller rudder & flaps QL Interceptor
- ITT Jabsco electric spotlight
- Yacht Controller full yacht remote control
- TVCC System with 10 cameras
- Plastimo Offshore compass
- Horn (air compressed)

## Engine rooms

Lady Rose's true masterpiece is without doubt her double engine room, engineered to perfection in every form! The engineering of Pacific yachts shows very clean and well installed high quality equipment. A very large hydraulic PTO was installed to give hydraulic power to all Lady Rose's features. Inside her engine room you find features like the HR Kabola central heating with hot water tap function, double Separ filters with cross-overs, heavy duty pumps, the hydraulic stabilizers, chiller systems and many more. One extra feature well worth mentioning is her 1500rpm generator with extra power PTO, exhaust and water separator. The gen-set delivers

16 kilowatts of power without any noise both inside and outside.

#### Tanks:

- Fuel: 4500 litres
- Water: 1500 litres
- Waste water: 400 litres
- Consumption: approximately 30 litres per hour in total

#### Materials

Lady Rose was built out of special treated plasma cut steel.

- Keel 8mm
- Hull 6mm
- Superstructure 4mm,
- Solid teak decks 12mm.
- Sound and thermic insulation 80mm
- Paint: AwlGrip high gloss 2 component
- Railings: Stainless steel 316 polished
- Rubbing strikes: Stainless steel 316 polished
- Fender holders: Stainless steel 316 polished
- Glazing: Gebo Thermic Line double marine glazing

#### Dimensions:

- Length: 22.50m
- Beam: 5.65m
- Draft: 1.40m
- Weight: 45 tons

Viewing of Lady Rose is highly recommended.

#### Disclaimer

GrandYachts offers the details of this vessel in good faith but cannot guarantee or warrant the accuracy of this information nor warrant the condition of the vessel. A buyer should instruct his agents, or his surveyors, to investigate such details as the buyer desires validated. This vessel is offered subject to prior sale, price change, or withdrawal without notice.

#### General information

Make:	Pacific
Model:	S205/225
Year:	2011
Condition:	Used
Hull:	Steel

#### Engine

Engine:	Volvo Penta D9-500 2011
Engine type:	Inboard engine
Fuel type:	Diesel
Fuel tank:	4500 l (1,188.78 gal)

#### Measurements

Length:	22.5 m (73.82 ft)
Beam:	5.65 m (18.54 ft)
Deep:	0 m (0.00 ft)

#### Accommodation

Cabins:	0
Berths:	4
Watertank:	1500 l (396.26 gal)
Holdingtank:	200 l (52.83 gal)



Pacific S205/225



Pacific S205/225



Pacific S205/225



Pacific S205/225



Pacific S205/225



Pacific S205/225



Pacific S205/225



Pacific S205/225



Pacific S205/225



Pacific S205/225



Pacific S205/225



Pacific S205/225



Pacific S205/225



Pacific S205/225



Pacific S205/225



Pacific S205/225



Pacific S205/225



Pacific S205/225



Pacific S205/225



Pacific S205/225



Pacific S205/225



Pacific S205/225



Pacific S205/225



Pacific S205/225



Pacific S205/225



Pacific S205/225



Pacific S205/225



Pacific S205/225



Pacific S205/225



Pacific S205/225





Pacific S205/225



Pacific S205/225



Pacific S205/225



Pacific S205/225



Pacific S205/225



Pacific S205/225



Pacific S205/225



Pacific S205/225



Pacific S205/225



Pacific S205/225



Pacific S205/225



Pacific S205/225



Pacific S205/225



Pacific S205/225



Pacific S205/225



Pacific S205/225



Pacific S205/225



Pacific S205/225



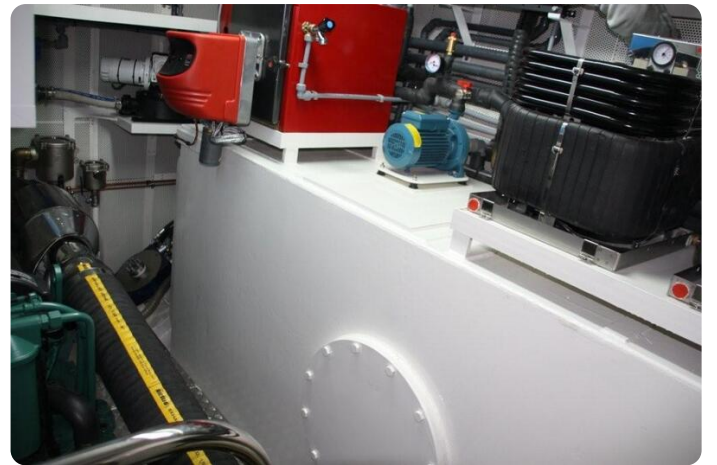
Pacific S205/225



Pacific S205/225



Pacific S205/225



Pacific S205/225



Pacific S205/225



Pacific S205/225



Pacific S205/225



Pacific S205/225



Pacific S205/225



Pacific S205/225



Pacific S205/225



Pacific S205/225



Pacific S205/225

**GrandYachts BV**

Geijsterseweg 10  
5861 BL Wanssum  
Netherlands

Phone: 0031(0)478450015

<https://grandyachts.eu>



**GRANDYACHTS<sup>®</sup>**