



Pershing 65 Limited

€520,000 • Aveiro Portugal • Used • 2000

Presented by

Justin Garwell
Phone: +44 (0) 1305 766504

JD YACHTS LIMITED
80 THE ESPLANADE
DT4 7AA WEYMOUTH
United Kingdom (UK)

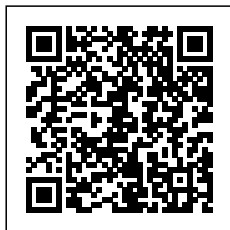


Details

Make:	Pershing
Model:	65 Limited
Year:	2000
Condition:	Used
Engine:	Caterpillar 3142E with Arneson Drives, 1420 hp
Engine type:	
Fuel type:	Diesel
Length:	19.7 m (64.63 ft)
Beam:	4.7 m (15.42 ft)
Cabins:	0
Berths:	0



JD YACHTS
LIMITED



7zea.com

Description

ENG
2000. 2 x 1420 HP Caterpillar 3142E with Arneson Drives
7 berths in 3 cabins plus crew
Lying: Aveiro Portugal
Owners Comments:
NEW Epoxy Primer & Antifoul

NEW Anodes & Engine Check

She has just be cleaned (including teak) and polished, ready for her new owners

ENG
Extras

Refit by Neptune Yacht Refit Services
Condaria Reverse Cycle Air Conditioning
2 x Air Conditioning Units to Cockpit
Bow Thruster with Remote Control
Stern Thruster with Remote Control
20 KVH KOHLER Generator
Besenzoni Hydraulic Passarelle
Besenzoni Hydraulic Crane, 400kg
Teak Laid Cockpit
Teak Laid Bathing Platform
NEW LED Lights to Cockpit
NEW LED Lighting to Name on the Stern
Garmin GPSmap KSV Chartplotter
NEW VHF Radio
NEW Safety Equipment
Fully Fitted Crew Cabin
TV's to all cabins
Radio/CD's to all cabins
4 Ring Hob to Galley

Standard Specification

Helm Area and Electronics

Navicontrol AP 303 gold Autopilot
Furuno radar
Engine alarms (CAT panels)
TV antenna
High speed compass
Remote fuel shut off
Remote air vent shut off E.R.
Engine fire extinguisher remote control
Electronic "trolling valve" control
Electronic engine Acc./Rev. lever control with synchronism
External fiberglass dashboard with hydraulic opening instrument compartment
External fiberglass dashboard on co-pilot side with compartment
Bow thruster controls
CAT engine displays
Pershing steering wheel
Controls for trim tabs and Arneson Drives
(2) Flap indicators
(2) Trim indicators
Rudder angle
Controls for lighting, bilge pumps, windlass
Quicksilver engine throttles
Double helm seat
Canvas sunroof overhead

Cockpit

Fore and aft sunbathing cushions
U-shaped seating to port
Teak flooring
Fiberglass extendable table with pedestal
Outdoor kitchen and wet-bar to starboard
Fiberglass refrigerator outside cockpit, 32 gals.
Fiberglass sink with fresh water faucet
External sofa in helm area w/ smooth Ivory vinyl seat cushions and backrest
2-Burner stove in cockpit
Ice maker
Fridge
(12) Side and central hard top chrome ceiling lights
(2) Stern swim platform lights
Trash bin
Sliding stern door, glass and stainless steel
Sliding fiberglass door with lock
Engine compartment inspection shutter

Lower Saloon

C-shaped leather sofa to port and galley to starboard
Leather wrapped ottomans with storage
(12) Ceiling lights with metal housings
Cherry inlay ceiling accents
(4) Stainless steel portholes
Digitally-controlled A/C system
Vinyl fabric wall coverings
Polished cherry wood work and cabinetry
Natural teak steps from top deck
Cross-paneled ceiling covered with Magilite style fabric
Accent lights
Carpeted flooring
Glass hi/lo coffee table

Galley

Concealed under cherry countertops to starboard
Refrigerator
Wood floors
Freezer
Polished cherry cabinetry
Exhaust fan
Drawers with cutouts for cutlery
Microwave oven
Stainless steel sink basin with folding tap
Galley unit in polished Cherry
(4) Burner electric ceramic cooktop

Master Stateroom

King size centerline berth
Digitally-controlled A/C system
Vinyl fabric wall coverings
Polished cherry wood work and cabinetry
Ceiling lights with metal housings
Cherry inlay ceiling accents
Carpeting
Hanging locker with clothes rod, internal light, drawers & shelves
Nightstands with polished Cherry
Sharp flatscreen TV
Digitally-controlled A/C system
(2) Reading lamps
Chest of drawers in polished Cherry
(3) Stainless steel portholes
Mirrored headboard
Fridge

Master Head

Towel rack

Shower with Plexiglass door and stainless steel hardware
Teak shower grating
Ivory fiberglass shower column
(4) Lights
Shower faucet
Basin faucet
Washbasin of Ivory fiberglass with lacquered cabinet door
Stainless steel porthole
Ivory fiberglass flooring
Hanging locker with polished Cherry doors
Towel rack
Mirror
Sink top of natural Travertine marble
Electric freshwater toilet

VIP Stateroom

Polished Cherry cabinetry
Center-lined double berth
Closet with clothes rod & internal light
Berth border covered with vinyl fabric
Nightstands with polished Cherry surface
Mirrored headboard
Digitally-controlled A/C system
Double bed mattress
(2) Reading lights
(2) Stainless steel portholes
Sliding cover for hatchway
Digitally-controlled A/C system
Vinyl fabric wall coverings
Polished cherry wood work and cabinetry
Ceiling lights with metal housings
Carpeting

Guest Stateroom

Polished Cherry locker door with inside mirror
Nightstand with polished Cherry surface and border
Digitally-controlled A/C system
Vinyl fabric wall coverings
Polished cherry wood work and cabinetry
Ceiling lights with metal housings
Carpeting
(2) Single berths
(1) Pullman berth
(2) Reading lamps
(2) Mattresses
(2) Stainless steel portholes
Cross-paneled ceiling covered with vinyl
Sharp flatscreen TV
Vinyl upholstered headboard
Hanging locker in bulkhead with polished Cherry doors

VIP/Guest Head

Towel rack
Shower with Plexiglass door and stainless steel hardware
Teak shower grating
Ivory fiberglass shower column
(4) Lights
Shower faucet
Washbasin faucet
Washbasin of Ivory fiberglass with lacquered cabinet door
Stainless steel porthole
Ivory fiberglass flooring
Hanging locker with polished Cherry doors
Towel rack
Mirror
Sink top of natural Travertine marble
Electric freshwater toilet

Crew Quarters

Crew cabin with head forward through exterior hatch on bow
Single bead
Sink

Toilet
Head

Hull & Deck Equipment

Anchor Bruce 66 lbs. with lock
Stainless steel railing
Stainless steel anchor hawser
(4) Stainless steel mooring cleats
Rub-rail with stainless steel insert rubbing strake
Galvanized anchor chain
Sportlight
Huge locker under stern sun pad
Hydraulic davit
Hydraulic bathing ladder
Sliding canvas top
Navigation lights
Telescopic extensible hideaway hydraulic gangway with remote control
Teak swim platform and steps
Hydraulic retractable swim ladder
Fiberglass superstructure with layered glass windscreen
Stainless steel black water extraction cap
Stainless steel fresh water filling cap
(2) Stainless steel fuel filling caps
(2) Stainless steel aft platform grab rods
Tender Garage
2000W dual command windlass
(2) Hideaway side mooring cleats
Stainless railing on the aft spoiler

Engine Room

(2) 24V Multi-function hydraulic control stations
A/C compressor
Automatic powder fire suppression system
(4) Seawater basket filters
(2) Fuel separator filters
19 kW Kohler 60Hz power generator with soundproof housing
Thermal insulation/soundproofing
Fuel level check
Plank ribbing in fiberglass
Waterproof bulkhead
(4) Ceiling light fixtures
Manual pump fuel drainage/loading
Dynamic air intakes on the bulkheads with remote control closure
Light alloy and teak step ladder
Stainless steel engine exhaust raiser
Structural fuel tank, fiberglass and light alloy
Fiberglass engine exhaust mufflers
Bilge pump engine suction by-pass valves
Generator manifold and exhaust fume separator
Dewalt compressor
Glendinning shore power bucket
8 gals. water heater (230V)
Electric bilge pump with manifold
(2) Electric bilge pumps
Structural fresh water tank, fiberglass and light alloy
Fiberglass gray water tank (34 gals.)
Stainless steel black water tank (68 gals.)
Hydraulic flap system
Bronze water inlets and outlets
ZF transmissions

Electrical System

(2) Engine starting batteries, 260A 24V
Generator starting battery, 100 A 12V
(2) Bow thrusters 160A 24V
(2) Engine service batteries, 260A 24V
Electric engine room extractors
Mass insulation with copper plait
Parallel on batteries
Battery charger partition
110V GFI Sockets (1 per room)

Engine connection panel
Accessory control panel with cut-out switches
Power supply panel in engine room
Galvanic protection with zinc
Battery cut-off
Voltage measuring instruments, 24V/230V
Battery charger, Mastervolt, 24V 15A
Battery charger, Mastervolt, 24V 75A
Battery charger, Mastervolt, 12V 10A

General information

Make:	Pershing
Model:	65 Limited
Year:	2000
Condition:	Used

Engine

Engine:	Caterpillar 3142E with Arneson Drives, 1420 hp
Engine type:	
Fuel type:	Diesel

Measurements

Length:	19.7 m (64.63 ft)
Beam:	4.7 m (15.42 ft)
Deep:	1.4 m (4.59 ft)
Weight:	28974 ()

Accommodation

Cabins:	0
Berths:	0

Images



Image courtesy of JD Yachts



Image courtesy of JD Yachts



Image courtesy of JD Yachts



Image courtesy of JD Yachts



Image courtesy of JD Yachts



Image courtesy of JD Yachts



Image courtesy of JD Yachts



Image courtesy of JD Yachts



Image courtesy of JD Yachts



Image courtesy of JD Yachts



Image courtesy of JD Yachts



Image courtesy of JD Yachts



Image courtesy of JD Yachts



Image courtesy of JD Yachts



Image courtesy of JD Yachts



Image courtesy of JD Yachts



Image courtesy of JD Yachts



Image courtesy of JD Yachts



Image courtesy of JD Yachts



Image courtesy of JD Yachts



Image courtesy of JD Yachts



Image courtesy of JD Yachts



Image courtesy of JD Yachts



Image courtesy of JD Yachts



Image courtesy of JD Yachts



Image courtesy of JD Yachts



Image courtesy of JD Yachts



Image courtesy of JD Yachts



Image courtesy of JD Yachts



Image courtesy of JD Yachts

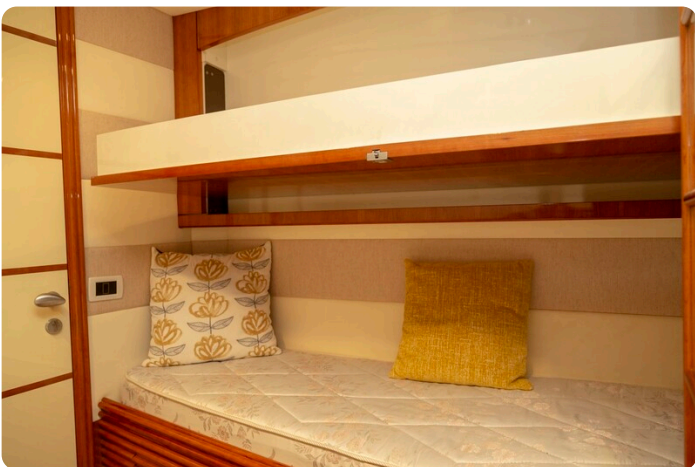


Image courtesy of JD Yachts



Image courtesy of JD Yachts

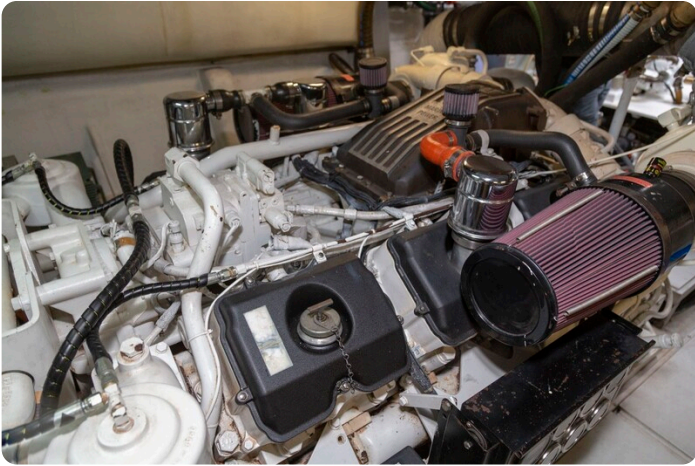


Image courtesy of JD Yachts



Image courtesy of JD Yachts



Image courtesy of JD Yachts



Image courtesy of JD Yachts



Image courtesy of JD Yachts



Image courtesy of JD Yachts



Image courtesy of JD Yachts



Image courtesy of JD Yachts

JD YACHTS LIMITED

80 THE ESPLANADE
DT4 7AA WEYMOUTH
United Kingdom (UK)

Phone: +44 (0) 1305 766504

<http://jdyachts.com>



 YACHTS.

The logo consists of a stylized 'JD' monogram in orange and white, followed by the word 'YACHTS.' in white, all set against a solid black rectangular background.