



Princess S65

£1,599,000 • Portland United Kingdom (UK) • Used • 2017

Presented by

Justin Garwell
Phone: +44 (0) 1305 766504

JD YACHTS LIMITED
80 THE ESPLANADE
DT4 7AA WEYMOUTH
United Kingdom (UK)



Details

Make:	Princess
Model:	S65
Year:	2017
Condition:	Used
Engine:	MAN V12, 1400 hp
Engine type:	
Fuel type:	Diesel
Length:	20.37 m (66.83 ft)
Beam:	5.11 m (16.77 ft)
Cabins:	0
Berths:	0



JD YACHTS
LIMITED



7zea.com

Description

ENG
2017. 2 x 1400 HP MAN V12
8 berths in 4 cabins
Lying: Portland UK
Owners Comments:
Avon 320DL Jet Rib Weber 4 Stroke include in sale.

Engines and generator serviced March 2024.

ENG
Extras

Seakeeper NG9 Gyro Stabiliser
SidePower Variable Speed Bow Thruster
SidePower Variable Speed Stern Thruster
Onan 19.5kw Generator
Reverse Cycle Air Conditioning Throughout
4 x Furuno 12.1" Displays with Autopilot, VHF and Radar
AIS
Electric Aft Sun Awning
Electro-Hydraulic Hi-Lo Bathing Platform
Teak Laid Bathing Platform
Teak Laid Side Decks
Teak Laid Cockpit
Teak Laid Flybridge
Dishwasher
Washer-dryer
Lumishore Underwater Lights x 4 (Blue)
Ice Maker

Standard Specification

Helm & Navigation Equipment

2 x Upholstered Leather Helm Seats (Adjustable)
Autopilot - Furuno 711c
Raymarine 260E VHF
2 x Furuno Navnet TZ Touch 2 Multifunction Displays
Furuno Radar
Bow & Stern Thruster Controls
Trim Tabs Controls
Gyro Stabiliser Controls
Engine Controls
Princess Adjustable Steering Wheel
Radar - Furuno
AIS - Raymarine Class B transponder interfaced with
Chartplotter
Horn
Navigation lights
Compass
Side Opening Door (Electronically Operated)
Windscreen Demisting System

Galley

Microwave - Microwave Combi Oven Bosch
BOSCH Four Ring Hob
Extractor Fan
Fullsize Fridge/ Freezer
Dishwasher - Fishers & Paykel
Stainless Steel Sink & Drainer
Storage Cabinets
Venetian Blind
Air Conditioning Outlets
LED Lighting

Cockpit

Fold Out Table
Upholstered Seating
Upholstered Sun Bathing Pads
Teak Laid Flooring
Storage Lockers
Underwater Light Controls
LED Lighting
Speakers
Sliding Door To Saloon
Opening Window to Saloon
Steps to Flybridge
Access Hatch to Engine Room

Saloon

46" LED TV
Upholstered L-Shaped Sofa
Raised Level Upholstered U-Shaped Sofa
Fold Out Dining Table x 2
Cabinetry with Electrically-Operated Lifting TV
Refridgerator
Glasses Cabinet
Electrically Operated Sliding Roof
Air Conditioning Outlets
Skylights x 3
Venetian Blinds
LED Lighting
Speakers

Electrical Equipment

Stern thruster - Variable speed
Bow thruster - Variable speed
Battery charger
Generator - Onan 19.5Kw generator (upgrade)
Bilge pump - Auto and manual systems
Heating - Windscreen demist system powered from calorifier
Air conditioning - Reverse cycle 88,000 BTU suitable for upto
40 degrees to all cabins
46" LED TV to saloon
46" LED TV to owners stateroom
32" LED TV to forward cabin
DVD player
Shorepower
Water heater
Hot & cold water system
Holding tank
Toilets - Electric silent flush
Surround sound system - Harman Kardon 5.1 Blu-ray system
Exterior LED deck lights
Sliding roof - Electric sliding roof over forward saloon with
skylight and blind
Sun awning - Electric Sun awning to aft end of cockpi

Flybridge

Teak Laid Flybridge
Wetbar with Lava Brick BBQ
Stainless Steel Sink
Ice Maker
Refrigerator
Upholstered Seating
Fold Out Table
Bimini
Stainless Steel Handrails
Fixable Opening Hatch
Speakers
Storage Lockers
Cupholders

Flybridge Helm

2 x Upholstered Helm Seats
 Autopilot - Furuno 711c Autopilot
 Raymarine 260E VHF
 2 x Furuno Navnet TZ Touch 2 Multifunction Displays
 Furuno Radar
 Bow & Stern Thruster Controls
 Engine Controls
 Anchor Controls
 Trim Tabs Controls
 Princess Adjustable Steering Wheel
 Compass
 Horn

Bow

Double Upholstered Sun Lounger with Adjustable Head Rests
 Upholstered Sofa Seating
 Stainless Steel Grab Rails
 Teak Laid Flooring
 Storage Lockers
 Speakers
 Cupholders

General Equipment

Anchor - Stainless Steel
 Bimini
 Auto and Manual Fire Extinguisher Systems
 Electric Dual Station Anchor Winch
 Covers for Flybridge, Foredeck Seating and Aft Cockpit
 Electro-Hydraulic Hi-Lo Bathing Platform (550kg)
 Hydraulic Passarelle
 Garage - For Williams 325 (NOT INCLUDED)
 Stern Docking Winches
 Underwater Lighting - x 4 Lumishore SMX95 Blue
 Teak Laid Cockpit
 Teak Laid Flybridge
 Teak Laid Side Decks
 Sunbather - Aft Sunlonger over Garage Foredeck Sunlounger
 Overhead & Low-Level Courtesy Lighting
 Hot & Cold Swimming Shower
 Hydraulic Trim Tabs
 Gyro Stabilizer - Seakeeper NG9
 Ice Maker - Fitted to Sportsbridge bar and saloon

Owners Suite

Queen Berth
 Bedside Reading Lights x 2
 Bedside Tables x 2
 Venetian Blinds
 Underbed Storage Drawers
 Full-Height Double Wardrobe
 Full Length Mirror
 2-Seater Sofa
 Opening Portholes x 2
 Air Conditioning Outlets
 46" LED TV
 LED Lighting

Owners Head

Glass Door Walk-In Shower
 Rain Shower Head
 Electric Silent Flush Toilet
 Large Sink with Storage Beneath
 Towel Rack
 LED Lighting
 Venetian Blind

Forward Cabin

Double Berth
 Bedside Reading Lights x 2
 Venetian Blinds
 Underbed Storage Drawers

Wardrobe
 Opening Portholes x 2
 32" LED TV
 Mirror
 LED Lighting
 Air Conditioning Outlets

Forward Cabin Head

Glass Door Walk-In Shower
 Electric Silent Flush Toilet
 Sink with Storage Beneath
 Towel Rack
 LED Lighting
 Venetian Blind

Guest Cabin 1

2 Single Berths
 Bedside Reading Lights x 2
 Venetian Blind
 Underbed Storage Drawers
 Wardrobe
 Opening Porthole
 Air Conditioning Outlets
 LED Lighting

Guest Cabin 2

2 Single Bunk Berths
 Bedside Reading Lights x 2
 Venetian Blinds
 Wardrobe
 Opening Porthole
 Air Conditioning Outlets
 LED Lighting

Guest/ Day Head

Glass Door Walk-In Shower
 Electric Silent Flush Toilet
 Sink with Storage Beneath
 Towel Rack
 LED Lighting
 Venetian Blind

General information

Make:	Princess
Model:	S65
Year:	2017
Condition:	Used

Engine

Engine:	MAN V12, 1400 hp
Engine type:	
Fuel type:	Diesel

Measurements

Length:	20.37 m (66.83 ft)
Beam:	5.11 m (16.77 ft)
Deep:	1.45 m (4.76 ft)
Weight:	30500 ()

Accommodation

Cabins:	0
Berths:	0

Images



Image courtesy of JD Yachts



Image courtesy of JD Yachts



Image courtesy of JD Yachts



Image courtesy of JD Yachts



Image courtesy of JD Yachts



Image courtesy of JD Yachts



Image courtesy of JD Yachts



Image courtesy of JD Yachts



Image courtesy of JD Yachts



Image courtesy of JD Yachts



Image courtesy of JD Yachts



Image courtesy of JD Yachts



Image courtesy of JD Yachts



Image courtesy of JD Yachts



Image courtesy of JD Yachts



Image courtesy of JD Yachts



Image courtesy of JD Yachts



Image courtesy of JD Yachts



Image courtesy of JD Yachts



Image courtesy of JD Yachts



Image courtesy of JD Yachts



Image courtesy of JD Yachts



Image courtesy of JD Yachts



Image courtesy of JD Yachts



Image courtesy of JD Yachts



Image courtesy of JD Yachts



Image courtesy of JD Yachts



Image courtesy of JD Yachts



Image courtesy of JD Yachts



Image courtesy of JD Yachts



Image courtesy of JD Yachts



Image courtesy of JD Yachts



Image courtesy of JD Yachts



Image courtesy of JD Yachts



Image courtesy of JD Yachts



Image courtesy of JD Yachts



Image courtesy of JD Yachts



Image courtesy of JD Yachts



Image courtesy of JD Yachts



Image courtesy of JD Yachts



Image courtesy of JD Yachts



Image courtesy of JD Yachts



Image courtesy of JD Yachts



Image courtesy of JD Yachts



Image courtesy of JD Yachts



Image courtesy of JD Yachts



Image courtesy of JD Yachts



Image courtesy of JD Yachts



Image courtesy of JD Yachts



Image courtesy of JD Yachts



Image courtesy of JD Yachts



Image courtesy of JD Yachts



Image courtesy of JD Yachts



Image courtesy of JD Yachts



Image courtesy of JD Yachts



Image courtesy of JD Yachts



Image courtesy of JD Yachts



Image courtesy of JD Yachts



Image courtesy of JD Yachts



Image courtesy of JD Yachts



Image courtesy of JD Yachts



Image courtesy of JD Yachts



Image courtesy of JD Yachts



Image courtesy of JD Yachts



Image courtesy of JD Yachts



Image courtesy of JD Yachts



Image courtesy of JD Yachts



Image courtesy of JD Yachts



Image courtesy of JD Yachts



Image courtesy of JD Yachts



Image courtesy of JD Yachts

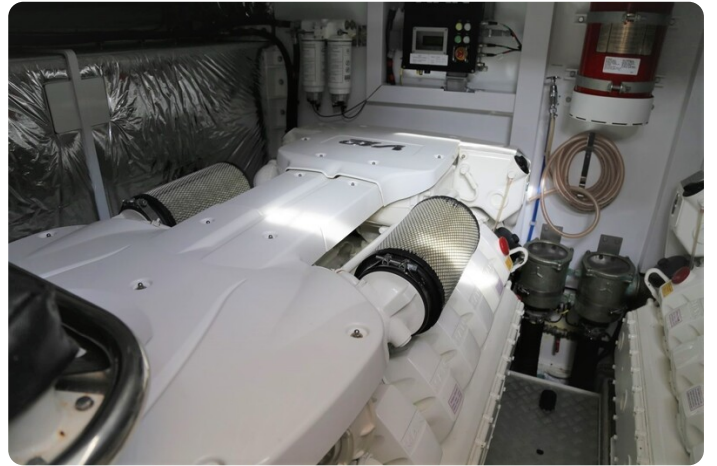


Image courtesy of JD Yachts



Image courtesy of JD Yachts



Image courtesy of JD Yachts



Image courtesy of JD Yachts



Image courtesy of JD Yachts



Image courtesy of JD Yachts

JD YACHTS LIMITED

80 THE ESPLANADE
DT4 7AA WEYMOUTH
United Kingdom (UK)

Phone: +44 (0) 1305 766504

<http://jdyachts.com>



 YACHTS.

The logo consists of a stylized 'JD' monogram in orange and white, followed by the word 'YACHTS.' in white, all set against a black square background.