



Princess V48

€670,500 • North Jutland Danmark • Begagnad • 2014

Presenterad av

Justin Garwell
Phone: +44 (0) 1305 766504

JD YACHTS LIMITED
80 THE ESPLANADE
DT4 7AA WEYMOUTH
Storbritannien



Detaljer

Tillverkare:	Princess
Modell:	V48
År:	2014
Kondition:	Begagnad
Motor:	Volvo IPS 600, 435 hp
Motortyp:	
Bränsletyp:	Diesel
Längd:	15.58 m (51.12 ft)
Bredd:	4.11 m (13.48 ft)
Kabiner:	0
Kojer:	0



JD YACHTS
LIMITED



7zea.com

Beskrivning

ENG
2014. 2 x 435 HP Volvo IPS 600
4 berths in 2 cabins
Lying: North Jutland Denmark

ENG
Extras

Eberspacher M10 Heating System Throughout
Onan 11kw Generator
Hi-Lo Bathing Platform
IPS Joystick Control
Side-Power Bow Thruster
Teak Laid Bathing Platform
Teak Laid Cockpit
Raymarine HybridTouch 15.4" Colour Multifunction Display
Raymarine Autopilot
Cockpit Sun Awning with complete Full Height Cockpit Cover
Upper Saloon - LED TV on Rise & Fall System
Lower Saloon - 28" LED TV
Owners Stateroom - 28" LED TV
Forward Guest Cabin - 22" LED TV
Scissor Berths in Guest Cabin
Combi Oven
Dishwasher
Cockpit Wetbar with Grill

Standard Specification

Standard Equipment

Power-assisted steering system
Volvo joystick manoeuvring control
24v DC/240v AC electrical system
240v shore power with 40-amp float battery charger
Remote control electric anchor winch
Electro-hydraulic trim tabs
VHF with DSC R/T
Speed and distance log
Echo sounder with alarm
Remote control searchlight
Combination microwave/conventional oven/grill
Refrigerator with deep freeze compartment
Electric quietflush toilets
Saloon and cockpit stereo CD/radio
Teak-laid transom platform/cockpit deck/stairs to side decks

Deck Fittings

Reversible electric anchor winch with foredeck and helm position controls
Self-stowing 20kg/44lb Delta anchor with 40m chain
Stemhead roller with automatic anchor launch and retrieve
Stainless-steel bow, stern and spring cleats
Stainless-steel pulpit and guard rails
Stainless-steel coachroof handrails
Foredeck hatch with integrated skylight
PVC rubbing band with stainless-steel insert
Full set of IMCO navigation lights
Riding light
Remote control searchlight
Twin electric horns
Fuel and water fillers

Cockpit

Self-draining
U-shaped seating/dining area
Teak table

Overhead and low level courtesy lights
Tonneau cover
Stainless-steel grabrails
Transom hatch to stern lazarette
Access hatch to engine room
220/240v shore support inlet in locker
Life raft locker
Transom platform with integrated swimming ladder (with optional electro-hydraulic raise/lower mechanism)
Twin transom doors
Hot and cold shower
Locker for 2 gas bottles
Storage lockers

Helm Position

Helm seat with sit/stand facility
Full engine instrumentation
Fuel gauges
Single-lever engine controls
Joystick maneuvering control
Rudder position indicator
Power-assisted steering system and adjustable steering wheel
Remote control anchor winch
Trim tab controls with indicators
VHF with DSC R/T
Speed and distance log
Echo sounder with alarm
Remote control searchlight
High speed compass
Horn button
Chart area
Twin windscreen wipers
Windscreen freshwater pressure wash
Bilge pump controls with visual "pump running" indicator (3)
Electric side window

Upper Saloon

U-shaped sofa
Dining table
Cocktail cabinet
Refrigerator
Overhead downlighters
Electric opening roof
Triple stainless-steel framed sliding doors to cockpit
Radio/CD/MP3 with saloon and cockpit speakers
Timber-laid flooring

Lower Saloon

L-shaped sofa
Table
Storage lockers
Overhead downlighters
Main electrical control panel with battery isolation switches
Opening portlights (2)

Galley

Avonite (or similar) worktop
3 zone gas hob with flame failure device (optional 3 ring ceramic hob)
Stainless-steel sink with Monobloc mixer tap
Combination microwave/conventional oven with grill
Refrigerator with freezer compartment
Waste bin
Storage cupboards, drawers and lockers
Timber-laid flooring
Under floor storage bin
Opening portlights

Owners Stateroom

Large double bed with drawers below
Wardrobe with shelves
Drawers and storage lockers
Overhead and individual berth lights
Sofa
Dressing table
Panoramic trapezoidal windows in toughened glass with opening ports
En-suite bathroom:
Avonite worktop
Wash basin with Monobloc mixer tap
Separate stall shower with extractor
Mirror
Storage locker
Opening portlight

Forward Guest Cabin

Large double bed with drawers below (option of scissor berths)
Wardrobe
Deck hatch with integrated fly screen and blind
Storage lockers
Downlighters and individual berth lights
Trapezoidal side windows with opening ports
En-suite bathroom:
Wash basin with Monobloc mixer tap
Separate stall shower with extractor
Mirror
Storage locker
Opening portlight

Power And Drive Systems

Twin Volvo IPS-600
Power-assisted steering
Electronic engine controls
Joystick manoeuvring system
Volvo active corrosion protection system
Engine room extractor fans with electronic time delay
Trim tabs with indicators
Engine room lighting

Electrical Systems

24 Volt:
4 x heavy-duty batteries for engine starting
4 x heavy-duty auxiliary batteries
Engine alternators charge via split charge relays to isolate engine start batteries from auxiliaries
40-amp 24v float battery charger
Battery paralleling system (for engine start back-up)
Remote battery master switches with control switch at main panel
Circuit breakers on all circuits
220/240 Volt:
Shore support inlet (32A)
Power points in owner's stateroom, forward guest cabin, galley (double), lower and upper saloon
Polarity check system
Earth leakage safety trip
Shaver points in both bathrooms

Fuel System

Twin fuel tanks (in NS8 marine grade alloy) with interconnection system giving 265 gallons/318 US gallons/1,200 litres capacity
Fuel fillers on both side decks
High-capacity fuel filter/water trap
Remote fuel cocks in cockpit locker
Fuel gauges on helm console

Water System

Water capacity totalling 80 gallons/96 US gallons/364 litres including 11 gallon/13 US gallon/50 litres hot water calorifier
Water heated by engine and 240v immersion heater
Automatic water pump with filter
Main circuit breaker at switch panel
Water level gauge
Deck filler

Fire Extinguishers

Automatic fire extinguisher in engine room and generator space

Bilge Pumps

Automatic electric bilge pumps with manual override (3 in all)
High-capacity manual bilge pump with valve system and suction points in engine room and accommodation space

Allmän information

Tillverkare:	Princess
Modell:	V48
År:	2014
Kondition:	Begagnad

Motor

Motor:	Volvo IPS 600, 435 hp
Motortyp:	
Bränsletyp:	Diesel

Mått

Längd:	15.58 m (51.12 ft)
Bredd:	4.11 m (13.48 ft)
Djupgående:	1.14 m (3.74 ft)
Vikt:	14300 ()

Ackommodation

Kabiner:	0
Kojer:	0



Image courtesy of JD Yachts



Image courtesy of JD Yachts



Image courtesy of JD Yachts



Image courtesy of JD Yachts



Image courtesy of JD Yachts



Image courtesy of JD Yachts



Image courtesy of JD Yachts



Image courtesy of JD Yachts



Image courtesy of JD Yachts



Image courtesy of JD Yachts



Image courtesy of JD Yachts



Image courtesy of JD Yachts



Image courtesy of JD Yachts



Image courtesy of JD Yachts



Image courtesy of JD Yachts



Image courtesy of JD Yachts



Image courtesy of JD Yachts



Image courtesy of JD Yachts



Image courtesy of JD Yachts



Image courtesy of JD Yachts



Image courtesy of JD Yachts



Image courtesy of JD Yachts

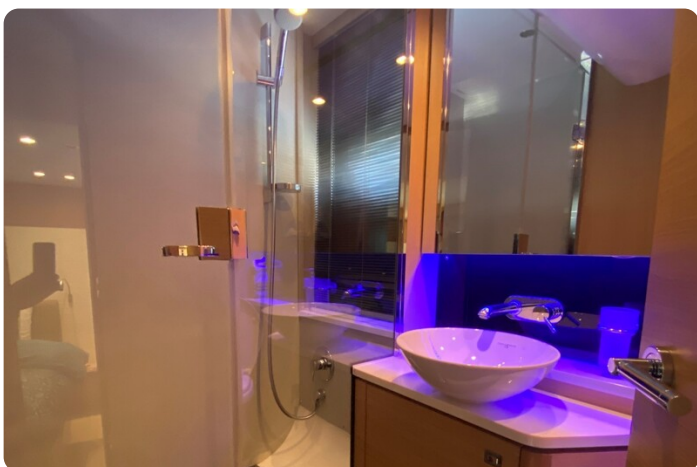


Image courtesy of JD Yachts



Image courtesy of JD Yachts



Image courtesy of JD Yachts



Image courtesy of JD Yachts



Image courtesy of JD Yachts



Image courtesy of JD Yachts



Image courtesy of JD Yachts



Image courtesy of JD Yachts

JD YACHTS LIMITED

80 THE ESPLANADE

DT4 7AA WEYMOUTH

Storbritannien

Telefon: +44 (0) 1305 766504

<http://jdyachts.com>



 YACHTS.