



Princess V48

£529,950 • Weymouth United Kingdom (UK) • Used • 2016

Presented by

Justin Garwell
Phone: +44 (0) 1305 766504

JD YACHTS LIMITED
80 THE ESPLANADE
DT4 7AA WEYMOUTH
United Kingdom (UK)



JD YACHTS
LIMITED



7zea.com

Details

Make:	Princess
Model:	V48
Year:	2016
Condition:	Used
Engine:	Volvo IPS 600, 435 hp
Engine type:	
Fuel type:	Diesel
Length:	15.58 m (51.12 ft)
Beam:	4.11 m (13.48 ft)
Cabins:	0
Berths:	0

Description

ENG
2016. 2 x 435 HP Volvo IPS 600
6 berths in 2 cabins
Lying: Weymouth UK
Owners Comments:
BRIG Tender and Chocks Available Under Separate Negotiation

ENG
Extras

AIS
Black Leather Helm Seats
Bow Cushions & Cover
Carpet Throughout
Cockpit Heating (Eberspacher)
Cockpit Table with Infill Cushion
Cockpit Wetbar with Sink, BBQ and Storage
Dimmer Switches in Bedroom Cabins
Dishwasher
Forward Cabin Scissor Berths
Hydraulic Hi-Lo Bathing Platform
Hydraulic Passerelle (2.9m telescopic letterbox type)
Koko White Galley Worktop
LED Surround lighting to Master Bedroom Cabin
Low Level Lights in Cockpit
Lower Dinette Sofa in Ice White Leather
Lower Dinette Table with Infill Cushion for Double Berth
Onan 11Kw Generator
Raymarine HybridTouch Navigation System
Satin Walnut Interior Wood Finish
Teak Laid Bathing Platform
Teak Laid Cockpit
Teak Laid Side Decks
Tropical Reverse Cycle Air Conditioning (54,000 BTU)
Underwater Lights
Volvo Penta Joystick Control
32" LED TV to Lower Saloon, Owners Stateroom, VIP Cabin
40" HD LED TV to Upper Saloon

Standard Specification

Standard Equipment

Power-assisted steering system
Volvo joystick manoeuvring control
24v DC/240v AC electrical system
240v shore power with 40-amp float battery charger
Remote control electric anchor winch
Electro-hydraulic trim tabs
VHF with DSC R/T
Speed and distance log
Echo sounder with alarm
Remote control searchlight
Combination microwave/conventional oven/grill
Refrigerator with deep freeze compartment
Electric quietflush toilets
Saloon and cockpit stereo CD/radio
Teak-laid transom platform/cockpit deck/stairs to side decks

Deck Fittings

Reversible electric anchor winch with foredeck and helm position controls
Self-stowing 20kg/44lb Delta anchor with 40m chain
Stemhead roller with automatic anchor launch and retrieve
Stainless-steel bow, stern and spring cleats
Stainless-steel pulpit and guard rails
Stainless-steel coachroof handrails
Foredeck hatch with integrated skylight

PVC rubbing band with stainless-steel insert
Full set of IMCO navigation lights
Riding light
Remote control searchlight
Twin electric horns
Fuel and water fillers

Cockpit

Self-draining
U-shaped seating/dining area
Teak table
Overhead and low level courtesy lights
Tonneau cover
Stainless-steel grabrails
Transom hatch to stern lazarette
Access hatch to engine room
220/240v shore support inlet in locker
Life raft locker
Transom platform with integrated swimming ladder (with optional electro-hydraulic raise/lower mechanism)
Twin transom doors
Hot and cold shower
Locker for 2 gas bottles
Storage lockers

Helm Position

Helm seat with sit/stand facility
Full engine instrumentation
Fuel gauges
Single-lever engine controls
Joystick maneuvering control
Rudder position indicator
Power-assisted steering system and adjustable steering wheel
Remote control anchor winch
Trim tab controls with indicators
VHF with DSC R/T
Speed and distance log
Echo sounder with alarm
Remote control searchlight
High speed compass
Horn button
Chart area
Twin windscreen wipers
Windscreen freshwater pressure wash
Bilge pump controls with visual pump running indicator (3)
Electric side window

Upper Saloon

U-shaped sofa
Dining table
Cocktail cabinet
Refrigerator
Overhead downlighters
Electric opening roof
Triple stainless-steel framed sliding doors to cockpit
Radio/CD/MP3 with saloon and cockpit speakers
Timber-laid flooring

Lower Saloon

L-shaped sofa
Table
Storage lockers
Overhead downlighters
Main electrical control panel with battery isolation switches
Opening portlights (2)

Galley

Avonite (or similar) worktop
3 zone gas hob with flame failure device (optional 3 ring ceramic hob)
Stainless-steel sink with Monobloc mixer tap
Combination microwave/conventional oven with grill
Refrigerator with freezer compartment
Waste bin
Storage cupboards, drawers and lockers
Timber-laid flooring
Under floor storage bin
Opening portlights

Owners Stateroom

Large double bed with drawers below
Wardrobe with shelves
Drawers and storage lockers
Overhead and individual berth lights
Sofa
Dressing table
Panoramic trapezoidal windows in toughened glass with opening ports
En-suite bathroom:
Avonite worktop
Wash basin with Monobloc mixer tap
Separate stall shower with extractor
Mirror
Storage locker
Opening portlight

Forward Guest Cabin

Large double bed with drawers below (option of scissor berths)
Wardrobe
Deck hatch with integrated fly screen and blind
Storage lockers
Downlighters and individual berth lights
Trapezoidal side windows with opening ports
En-suite bathroom:
Wash basin with Monobloc mixer tap
Separate stall shower with extractor
Mirror
Storage locker
Opening portlight

Power And Drive Systems

Twin Volvo IPS-600 (2 x 435mhp driving contra rotating propellers via pod drive)
Power-assisted steering
Electronic engine controls
Joystick manoeuvring system
Volvo active corrosion protection system
Engine room extractor fans with electronic time delay
Trim tabs with indicators
Engine room lighting

Electrical Systems

24 Volt:
4 x heavy-duty batteries for engine starting
4 x heavy-duty auxiliary batteries
Engine alternators charge via split charge relays to isolate engine start batteries from auxiliaries
40-amp 24v float battery charger
Battery paralleling system (for engine start back-up)
Remote battery master switches with control switch at main panel
Circuit breakers on all circuits
220/240 Volt:
Shore support inlet (32A)
Power points in owner's stateroom, forward guest cabin, galley (double), lower and upper saloon
Polarity check system
Earth leakage safety trip

Shaver points in both bathrooms

Fuel System

Twin fuel tanks (in NS8 marine grade alloy) with interconnection system giving 265 gallons/318 US gallons/1,200 litres capacity
Fuel fillers on both side decks
High-capacity fuel filter/water trap
Remote fuel cocks in cockpit locker
Fuel gauges on helm console

Water System

Water capacity totalling 80 gallons/96 US gallons/364 litres including 11 gallon/13 US gallon/50 litres hot water calorifier
Water heated by engine and 240v immersion heater
Automatic water pump with filter
Main circuit breaker at switch panel
Water level gauge
Deck filler

Fire Extinguishers

Automatic fire extinguisher in engine room and generator space

Bilge Pumps

Automatic electric bilge pumps with manual override (3 in all)
High-capacity manual bilge pump with valve system and suction points in engine room and accommodation space

General information

Make:	Princess
Model:	V48
Year:	2016
Condition:	Used

Engine

Engine:	Volvo IPS 600, 435 hp
Engine type:	
Fuel type:	Diesel

Measurements

Length:	15.58 m (51.12 ft)
Beam:	4.11 m (13.48 ft)
Deep:	1.14 m (3.74 ft)
Weight:	14300 ()

Accommodation

Cabins: 0

Berths: 0

Images



Image courtesy of JD Yachts



Image courtesy of JD Yachts



Image courtesy of JD Yachts



Image courtesy of JD Yachts



Image courtesy of JD Yachts



Image courtesy of JD Yachts



Image courtesy of JD Yachts



Image courtesy of JD Yachts



Image courtesy of JD Yachts



Image courtesy of JD Yachts



Image courtesy of JD Yachts



Image courtesy of JD Yachts



Image courtesy of JD Yachts



Image courtesy of JD Yachts



Image courtesy of JD Yachts

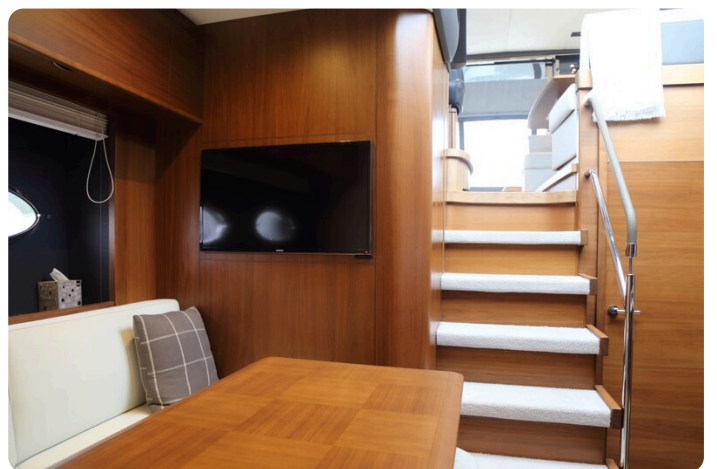


Image courtesy of JD Yachts



Image courtesy of JD Yachts



Image courtesy of JD Yachts



Image courtesy of JD Yachts



Image courtesy of JD Yachts



Image courtesy of JD Yachts



Image courtesy of JD Yachts



Image courtesy of JD Yachts



Image courtesy of JD Yachts



Image courtesy of JD Yachts



Image courtesy of JD Yachts



Image courtesy of JD Yachts



Image courtesy of JD Yachts



Image courtesy of JD Yachts

JD YACHTS LIMITED

80 THE ESPLANADE
DT4 7AA WEYMOUTH
United Kingdom (UK)

Phone: +44 (0) 1305 766504

<http://jdyachts.com>



 YACHTS.

The logo consists of a stylized 'JD' monogram in orange and white, followed by the word 'YACHTS.' in white, all set against a solid black rectangular background.