



Sealine 270

£29,995 • Brightlingsea United Kingdom (UK) • Used • 1995

Presented by

Peter Marchant
Phone: 44(0)1206302003

Morgan Marine
The Boatyard, Shipyard
Estate
CO7 0AR Colchester
United Kingdom (UK)

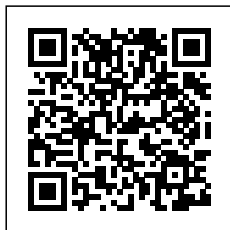


Details

| | |
|--------------|-------------------|
| Make: | Sealine |
| Model: | 270 |
| Year: | 1995 |
| Condition: | Used |
| Engine: | , 660 hp |
| Engine type: | |
| Fuel type: | Diesel |
| Length: | 8.51 m (27.92 ft) |
| Beam: | 2.72 m (8.92 ft) |
| Cabins: | 0 |
| Berths: | 0 |



Morgan Marine



7zea.com

Description

EN

Sealine 270 Sports cruiser powered by a Volvo AD41 200HP diesel engine. It has 4 berths and is in good condition. With a separate head compartment - sea toilet, sink, shower - Hot and cold pressurised water. Diesel heating, new upholstery, great accommodation for this size of cruiser. This boat is perfect for family days out on the water. New turbo fitted in June 2022. A definite must see! Full survey (February 2022) available.

Deck: Boarding platform and ladder. Cleats. Stainless steel handrails. Deck Hatch. Anchor with windlass. Blue canopy. Guard rails. Pulpit. Fenders and rope.

Cabin: 4 berths with full head height in the cabin (1.8m). Double aft cabin berth. Galley with sink, cooker and fridge. Saloon seating with table converting into double berth. Separate Head compartment with sea toilet, sink and shower - H/C Pressurised Water. Curtains and carpet.

Cockpit: Helm and co-pilot bench seat. C- shape cockpit seating with table. Lockable sliding door into cabin. Electronic Gauges.

Electronics: Navman 5600 tracker and JRC Radar. Icom VHF radio. Nav lights. Eberspacer diesel heating. Trim tabs. Shore power + Battery charger. 2x Windscreen wipers. Electric and manual bilge pump. Isolator switches. Horn.

Machinery: Volvo AD41 200HP diesel engine. Fuel capacity - 350 Litres. Water capacity - 154 Litres.

General information

| | |
|------------|---------|
| Make: | Sealine |
| Model: | 270 |
| Year: | 1995 |
| Condition: | Used |

Engine

| | |
|--------------|----------|
| Engine: | , 660 hp |
| Engine type: | |
| Fuel type: | Diesel |

Measurements

| | |
|---------|-------------------|
| Length: | 8.51 m (27.92 ft) |
| Beam: | 2.72 m (8.92 ft) |
| Deep: | 1.2 m (3.94 ft) |
| Weight: | 0 () |

Accommodation

| | |
|---------|---|
| Cabins: | 0 |
| Berths: | 0 |

Images



Sealine-270-MAIN



Sealine-270-main



Sealine-270-storage



Sealine-270-gallery



Sealine-270-dash



Sealine-270-table



Sealine-270-seating-area



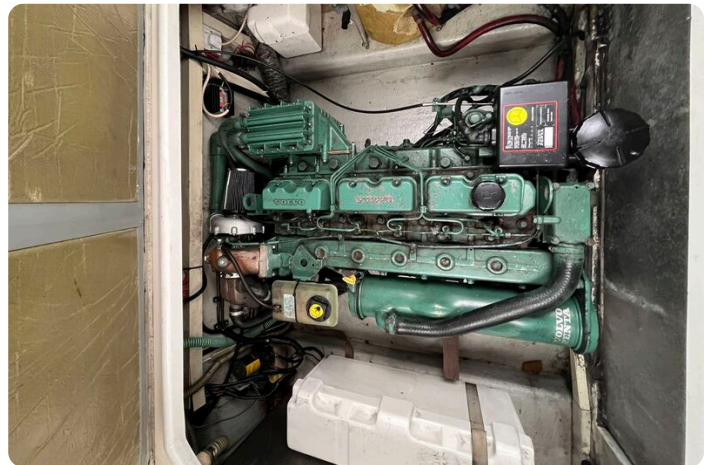
Sealine-270-isolator-switch



Sealine-270-cockpit



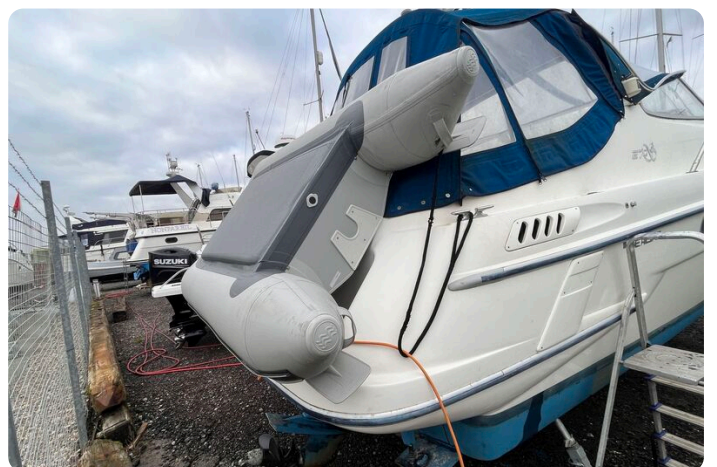
Sealine-270-storage



Sealine-270-engine



Sealine-270-engine-2



Sealine-270-digny



Sealine-270-prop



Sealine-270-side



Sealine-270-back



Sealine-270-side-view



Sealine-270-roof



Sealine-270-bow



Sealine-270-bow



Sealine-270-side-3



Sealine-270-prop



Sealine-270-wheel



Sealine-270-pilot-seat



Sealine-270-wheel



Sealine-270-dash



Sealine-270-berth



Sealine-270-aft-berth



Sealine-270-clocks



Sealine-270-doors



Sealine-270-fridge



Sealine-270-berth



Sealine-270-steps



Sealine-270-toilet





Sealine-270-dash-area



Sealine-270-door



Sealine-270-galley



Sealine-270-cooker



Sealine-270-BACK

Morgan Marine

The Boatyard, Shipyard Estate
CO7 0AR Colchester
United Kingdom (UK)

Phone: 44(0)1206302003

<https://morganmarine.com>

