



# Starfish 8 with extended wheelhouse

£19,500 • Brightlingsea United Kingdom (UK) • Used • 1988

## Presented by

Peter Marchant  
Phone: 44(0)1206302003

## Morgan Marine

The Boatyard, Shipyard  
Estate  
CO7 0AR Colchester  
United Kingdom (UK)



## Details

Make:	Starfish 8
Model:	with extended wheelhouse
Year:	1988
Condition:	Used
Engine:	, 300 hp
Engine type:	
Fuel type:	Diesel
Length:	8.12 m (26.64 ft)
Beam:	2.85 m (9.35 ft)
Cabins:	0
Berths:	0



Morgan Marine



7zea.com

## Description

EN

Starfish 8 with extended wheelhouse powered by a Ford 120hp inboard diesel engine just in at Morgan Marine. This boat is perfect for days out on the water fishing with family and friends or taking a nice cruise. This boat is bursting with options including Garmin Echo 500c fish finder, Raymarine plotter, Raymarine VHF radio, Autohelm ST300 autopilot, electric windlass, diesel heating, Solar power, fishing rod holders on the roof, large cockpit and much more! Call now for early viewing!

Cabin: Forward separate storage compartment with toilet. No berth area. Galley with 2x burner stove, oven, fridge and sink (with cold water pump). Lots of lockers. Carpeted flooring. Saloon L shaped cushioned seating.

Cockpit: Huge cockpit - great for fishing. Heavy duty storage lockers - step to side deck. Wheelhouse with aft door, good visibility - sliding windows, windscreen wiper and roof hatch. Good headroom throughout. Port side helm position with wheel, engine controls, switch panel, gauges and navigation electronics. Cockpit wheelhouse with wheel and throttle control. Cockpit stern bench seating with removable cushions. Removable cushions for cockpit engine lid.

Electronics: Garmin Echo 500c fish finder. Raymarine plotter. Raymarine VHF radio. Autohelm ST300 autopilot. 4x New batteries. 12v Rewire. Roof spot light. Horn. Solar power controller. Anchor light. Navigation lights. Switch panel. Stern light. Automatic bilge pump. Engine gauges (RPM, oil, fuel, volt, and temperature). JVC radio. TV.

Machinery: Ford 120hp inboard diesel engine. New gearbox. Re-pitched and balanced prop. Eberspacher diesel heater.

### General information

Make:	Starfish 8
Model:	with extended wheelhouse
Year:	1988
Condition:	Used

### Engine

Engine:	, 300 hp
Engine type:	
Fuel type:	Diesel

### Measurements

Length:	8.12 m (26.64 ft)
Beam:	2.85 m (9.35 ft)
Deep:	1 m (3.28 ft)
Weight:	0 ()

### Accommodation

Cabins:	0
Berths:	0





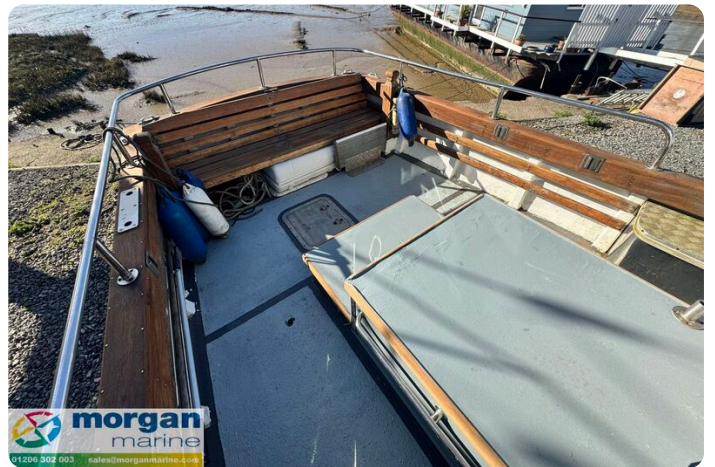
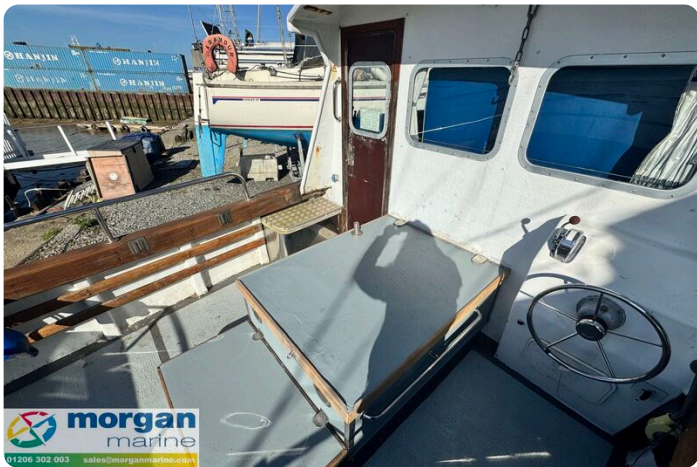






























**Morgan Marine**

The Boatyard, Shipyard Estate  
CO7 0AR Colchester  
United Kingdom (UK)

Phone: 44(0)1206302003

<https://morganmarine.com>

